



Digital Information Ltd.



Preproofer 740/780/940/980

**Installation and
Configuration Preproofer Software**

Digital Information Ltd.
Technoparkstrasse 1
CH-8005 Zürich

© Copyright by Digital Information Ltd. 2006

This manual is propriety in nature and the sole property of Digital Information. It may not be reproduced, in whole or in part, without the express written permission of Digital Information. Digital Information reserves the right to modify and/or delete any material and/or capabilities described herein.

All the documentation in this manual is instructional and for the operation of Preproofer machine. Digital Information shall not be responsible for any damage or claims resulting from any errors or omissions in this manual.

Owing to our policy of continuous product development, specifications, terms and description of Preproofer 940/980 are subject to change without prior notice.



Identifier	Installation manual - EN Configuration Preproofer software
Target group	Installation
Product	Preproofer 740/780/940/980
Version	V2.10
Article code	Preproofer DI7498-021 EN

Table of contents

1	Installation check list	1-1
1.1	Epson Models 9400/7400 and 9800/7800	1-1
2	Installation	2-1
2.1	Install the software DI-Plot	2-1
2.2	Install the software DI-P i lot Output Manger	2-1
2.3	Start the programs DI-Plot and DI-P i lot Output Manager	2-2
3	Software Configuration	3-1
3.1	Set the Input and the Output format in the software	3-1
3.2	PreProofer Settings	3-2
3.2.1	Basic Paper Adjustment “Length”	3-2
3.2.2	Basic Paper Adjustment “Width”	3-3
3.2.3	Setup Conversion	3-3
3.2.4	Setup Hotfolder	3-5
3.2.5	Menu Name Scheme	3-5
3.2.6	Menu Print Quality Conversion	3-6
3.2.7	Menu Print Quality Hotfolder	3-7
3.2.8	Color Management – Conversion Mode	3-7
3.2.9	Color Management – Hotfolder Mode	3-8
4	Setup the DI-P i lot Output Manager	4-2
4.1.1	Working with the DI-Pilot Preproofer Output Manager	4-3
5	Run the software to get the registration	5-1
5.1	Start DI-Plot	5-1
5.2	Start DI-P i lot Output Manager	5-2
5.3	Adjust Front and Back side	5-3
6	Hotfolder mode	6-2
6.1	Workflow job names	6-2
6.2	Work types	6-2
6.3	Setup hotfolders	6-3
6.4	Name schemes for Hotfolder mode	6-5
6.5	Color separated Input	6-7

1 Installation check list

1.1 Epson Models 9400/7400 and 9800/7800

	Action	
1	Install the Epson Printer Driver and the Epson Status Monitor	Available on the Epson CD or www.epson.com
2	Install the Epson LFP RemotePanel	Available on the Epson CD or www.epson.com
3	Check if the latest Firmware on the Epson Printer is installed. This can be done with Epson RemotePanel software.	Available on the Epson CD or www.epson.com
4	Set the Paper Source on printer FRONT to "ROLL+CUT"	On the Printer panel press the button  In the lower left corner on display a roll with a scissor sign will appear
5	Set the Paper Source on printer BACK to "SHEET"	On the Printer panel press the button  In the lower left corner on display a roll with a scissor sign will appear
6	Set on the Epson printers the Paper Skew Check to OFF	On the Printer panel go to: <ul style="list-style-type: none"> - Printer Setup - Paper Skew Check - Set to OFF
7	Set on the Epson printers the Paper size Check to ON	On the Printer panel go to: <ul style="list-style-type: none"> - Printer Setup - Paper Skew Check Set to ON
8	<p>Install the DI-Plot and the Preproofer Output Manager</p> <p>Set the delays and sync values for Epson 9800 like:</p> <p>Delay 1 = 1 Sync Front = 1536 Delay 2 = 25 Sync Back = 1200 Delay 3 = 40 Sync Single = 600 Delay 4 = 100</p> <p>Set the delays and sync values for Epson 9400 like:</p> <p>Delay 1 = 1 Sync Front = 1536 Delay 2 = 25 Sync Back = 800 Delay 3 = 40 Sync Single = 400 Delay 4 = 100</p>	Available on the DIL CD

1

Installation check list

Epson Models 9400/7400 and 9800/7800

Digital Information Ltd.

	Action	
9	Load the 6" roll paper. Important: Paper is loaded in the opposite way and winded through the decurl unit	Check the PDF document "PreProofer roll paper feeding.pdf"
10	Run the first FRONT/BACK job	
11	Backup the front and back side	Use the PageSetups in DI-Plot

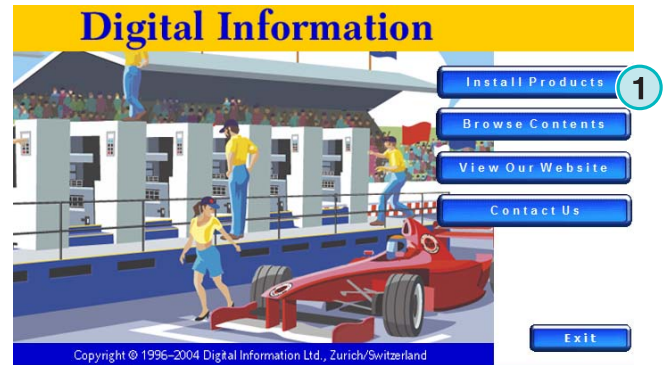
2 Installation

2.1 Install the software DI-Plot

Use the installer from the CD to install the DI-Plot software on the system. Make sure, to use PC workstation which has at least one RS232 com port (Com1) for communicating with the ShuffleBox for the lower printer.

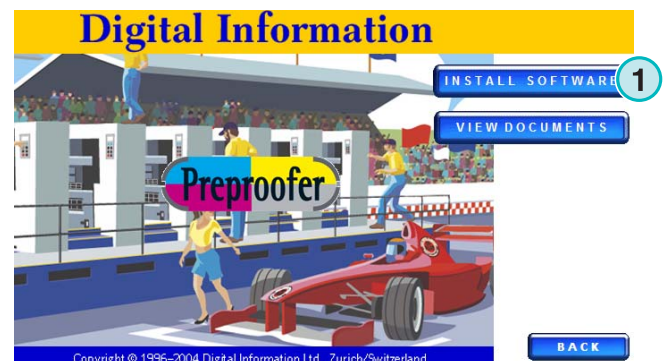
The software uses a hardware key from Sentinel. Install the driver which is located in the DI-Plot program directory in the folder “_DongleDriver”.

The detailed software installation procedure is described in the manual “DI-Plot admin”, chapter 2. Find the manual on the CD.



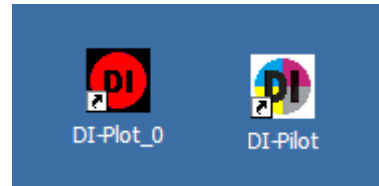
2.2 Install the software DI-P i lot Output Manger

Use the installer from the CD to install the DI-P i lot Output Manager software on the system.



2.3 Start the programs DI-Plot and DI-P i lot Output Manager

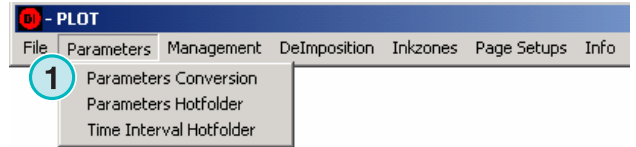
Start the DI-Plot and the DI-P i lot Output Manager software from the desktop.



3 Software Configuration

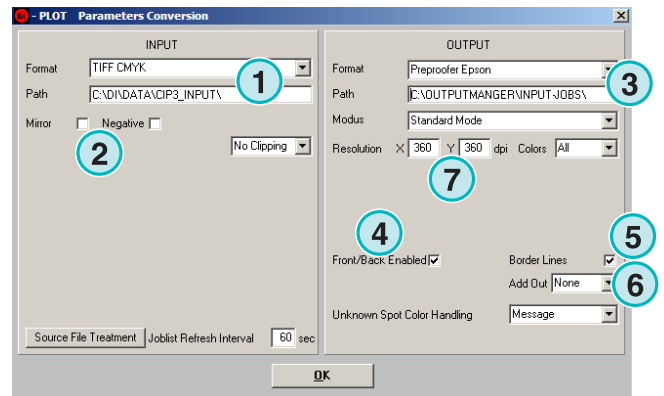
3.1 Set the Input and the Output format in the software

Open the menu Parameters -> Parameter conversion (1)



(1) Choose the input format which fits your workflow. The input path is the directory location where the TIFF files are exported from the Prepress Workflow Server.

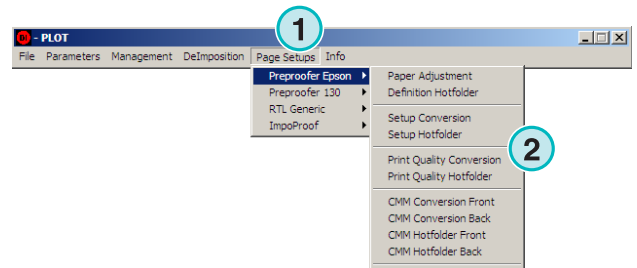
(3) Choose as output format “Preproofer Epson”. Select an output directory for the calculated jobs. The output path will be the input path for the DI-P i lot Output Manager software.



	Parameter name	Function
(1)	Input format and input path	Setup the input bitmap format and directory from your workflow.
(2)	Flip/Negative	Depending on the workflow setup you may have to set the check boxes “Flip” (= mirroring) or “Negative”.
(3)	Output format and output path	The output format is “Preproofer Epson”. Select an output directory where the generated files will be stored and further processed by the output manager DI-P i lot application.
(4)	Front/Back enable	Enable the Epson Preproofer synchronisation by selecting “Front/Back Enable” checkbox.
(5)	Border Lines	Prints a border line around the job according to the bitmap dimensions
(6)	Add Out	Select an additional output like CIP3, Inkzone or JDF data. The output file will be calculated after the creating the Preproofer data.
(7)	Resolution	Bitmap calculation resolution. Note: this is not the printing resolution. The printing resolution is set in the menu PageSetup.

3.2 PreProofer Settings

Go to the menu (1) and open the first entry called "Preproofer Epson". Configure the Preproofer system with these menu entries (2).



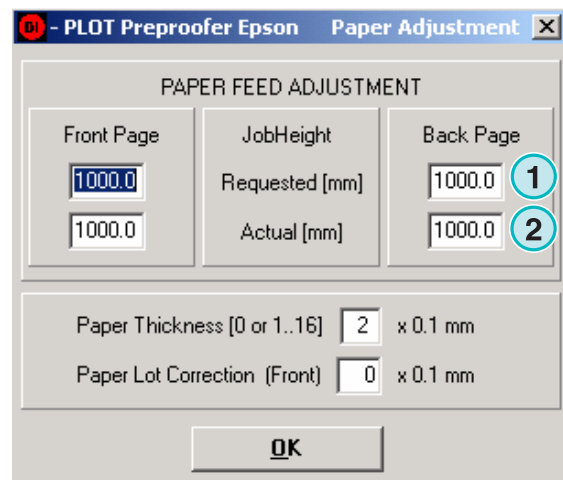
3.2.1 Basic Paper Adjustment "Length"

Use a flashlight or a light table to measure the job length on booth sides.

This is a basic adjustment which should be done first before any correction is done in the different PageSetups.

If the printed job length (paper feed direction) from the front and back side are not equal, adjust this mismatch like:

- First decide if you adjust the front or back side.
- (1) Enter the current length from this side in the field "Actual".
- (2) In the field "Requested" enter the value you need to match the other side.



Note:

Normally, the back side is a bit longer since the friction on the paper from the DeCurl unit will make the front side a bit shorter. If possible try making the longer page shorter.

Example

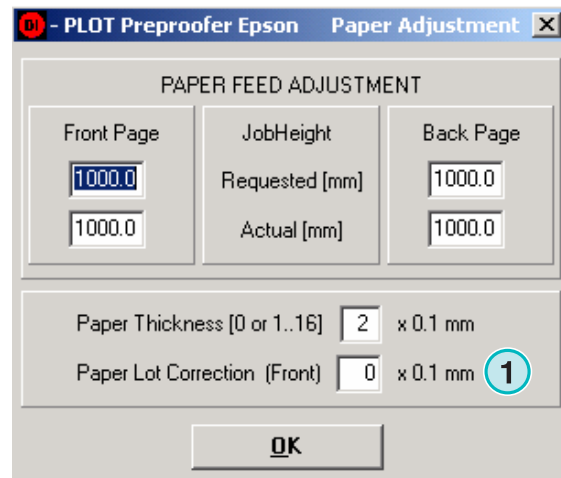
When comparing the front and the back side, the back side job image is longer by 0,5 mm. The measured distance between on the crop marks in height on the back side is 640 mm. At the actual field enter the value 640 and on the requested field enter 639,5 mm.

3.2.2 Basic Paper Adjustment “Width”

If the paper roll width differs from one production lot to the next lot more than 0.5mm in width you may use the value “Paper Lot Correction (Front)” **(1)** to correct this error.

Example

After paper roll change, you recognize that the new paper roll is wider than the previous one. To correct this error, enter a positive correction value in 1/10 of Millimetre.

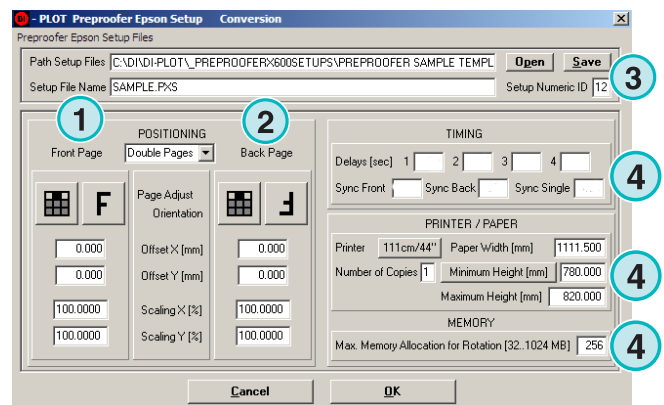


3.2.3 Setup Conversion

The page templates will allow positioning the bitmap data from a front and a back side on the printer's page. It is possible to setup several page templates for different need.

Note

Each template needs its own unique ID number.



Parameters for the Front Page (1)

Parameter name	Function
Offset X [mm]	Moves the bitmap data in the X-axis (horizontal) on the page
Offset Y [mm]	Moves the bitmap data in the Y-axis (vertical) on the page
Orientation (F)	Turn the page by 90, 180 and 270 degrees or mirror and turn the page for 0, 90 and 270 degrees
Page adjustment (tic tac toe)	Depending on your imposition data, select the page adjustment like left, center or right.
Scaling X [%]	Scales the bitmap data in the X-axis
Scaling Y [%]	Scales the bitmap data in the Y-axis

Parameters for the Back Page (2)

Parameter name	Function
Offset X [mm]	Moves the bitmap data in the X-axis (horizontal) on the page
Offset Y [mm]	Moves the bitmap data in the Y-axis (vertical) on the page
Orientation (F)	Turn the page by 90, 180 and 270 degrees or mirror and turn the page for 0, 90 and 270 degrees
Page adjustment (tic tac toe)	Depending on your imposition data, select the page adjustment like left, center or right.
Scaling X [%]	Scales the bitmap data in the X-axis
Scaling Y [%]	Scales the bitmap data in the Y-axis

Directory path and file name (3)

Parameter name	Function
Path setup files	Directory where the templates will be stored
Setup file name	The template name
Setup numeric ID	Each template needs a unique ID. Choose between 0 to 99
Button Save	Saves the template
Button Open	Opens a template

Miscellaneous (4)

Parameter name	Function
Timing	Set the values for Delay 1 to 4 and for Sync Front / Sync Back / Sync Single. Correct values for certain printer models are mentioned on the page 1-1.
Minimum height	Sets the minimum printed paper height. For jobs smaller then the minimum height : Total paper height = (Minimum height) + (printer margin) For jobs larger then the minimum height : Total paper height = (Bitmap job height) + (printer margin)
Additional height	Adds a value to the job height. Total paper height = (Bitmap job height) + (printer margin) + (Additional height)
Paper Width	Select you printer width
Max. memory allocation	The amount of RAM which is used for calculate the positioning and the rotating
Number of copies	Select the number of copies

3.2.4 Setup Hotfolder

The settings for the hotfolder templates are absolute identically to the manual conversion settings.

3.2.5 Menu Name Scheme

When the software is used in the fully automatic hotfolder mode, the file name scheme has to be set.

Note

Each workflow has its own way to handle the naming on the front and the back side for the jobs. Most simple way is, by setting a _F for the front side job and a _B at the back side job on the end of the file name:

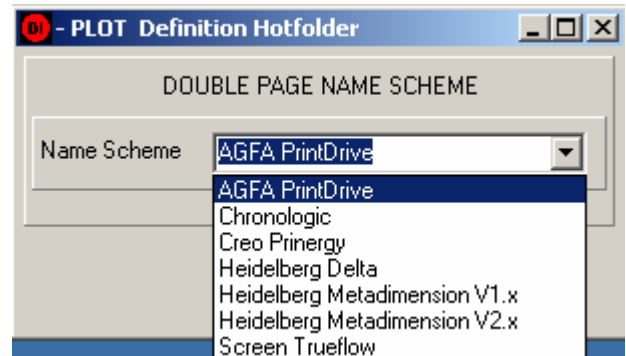
Demo_F.tif

Demo_B.tif

OR

Demo_FRONT.tif

Demo_BACK.tif

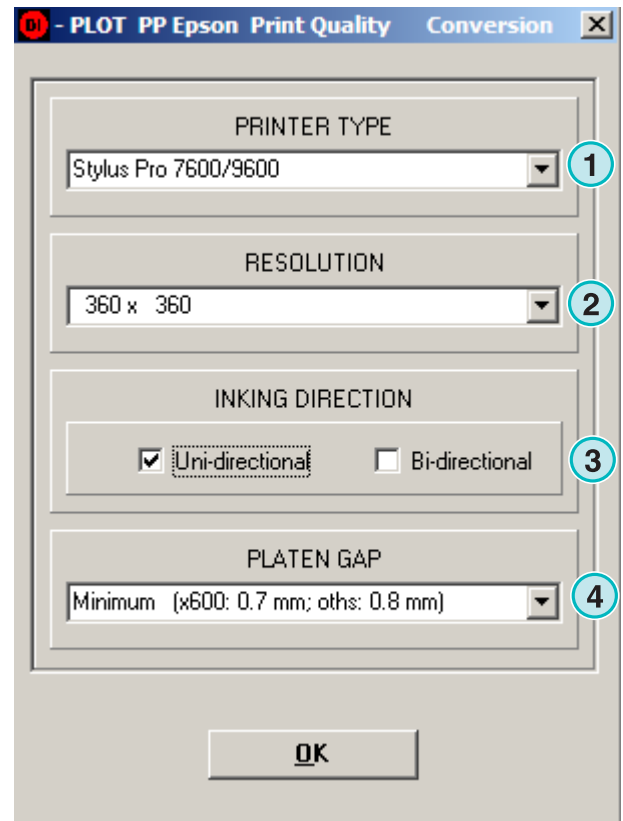


3.2.6 Menu Print Quality Conversion

Set for the print quality for the manual conversion mode here:

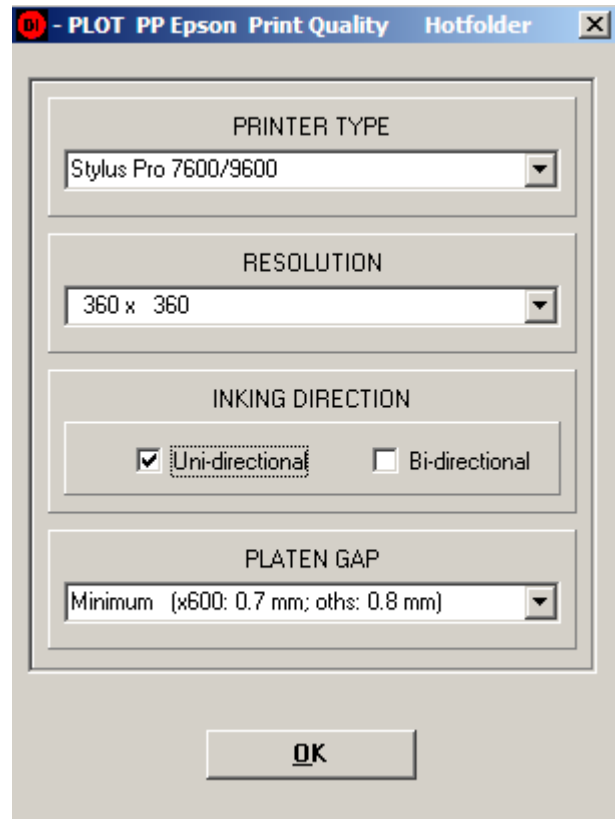
Select the printer type in the first list box **(1)**. The printing resolution is set here **(2)** and choose between unidirectional or bidirectional mode **(3)**.

Set the Platen Gap **(4)** to default.



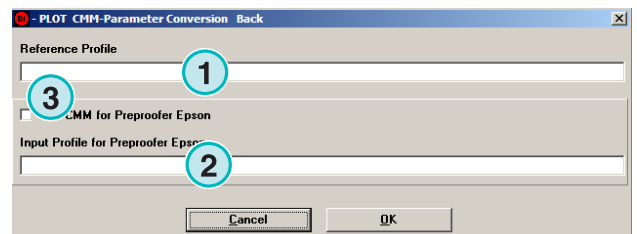
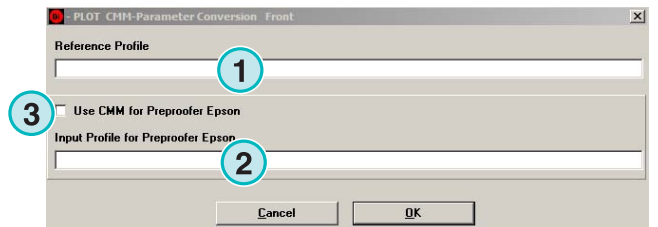
3.2.7 Menu Print Quality Hotfolder

Set the print quality for the automatic hotfolder mode like for the manual mode.



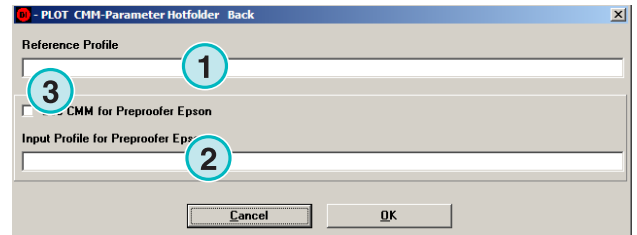
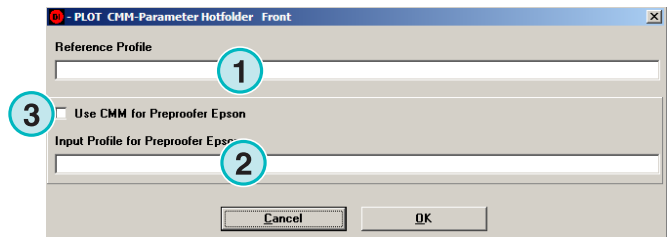
3.2.8 Color Management – Conversion Mode

The color management settings for the manual conversion mode are set for each printer individually. Set the printer paper profile (1) and the reference profile (2). Activate the CMM by activating the check box (3).



3.2.9 Color Management – Hotfolder Mode

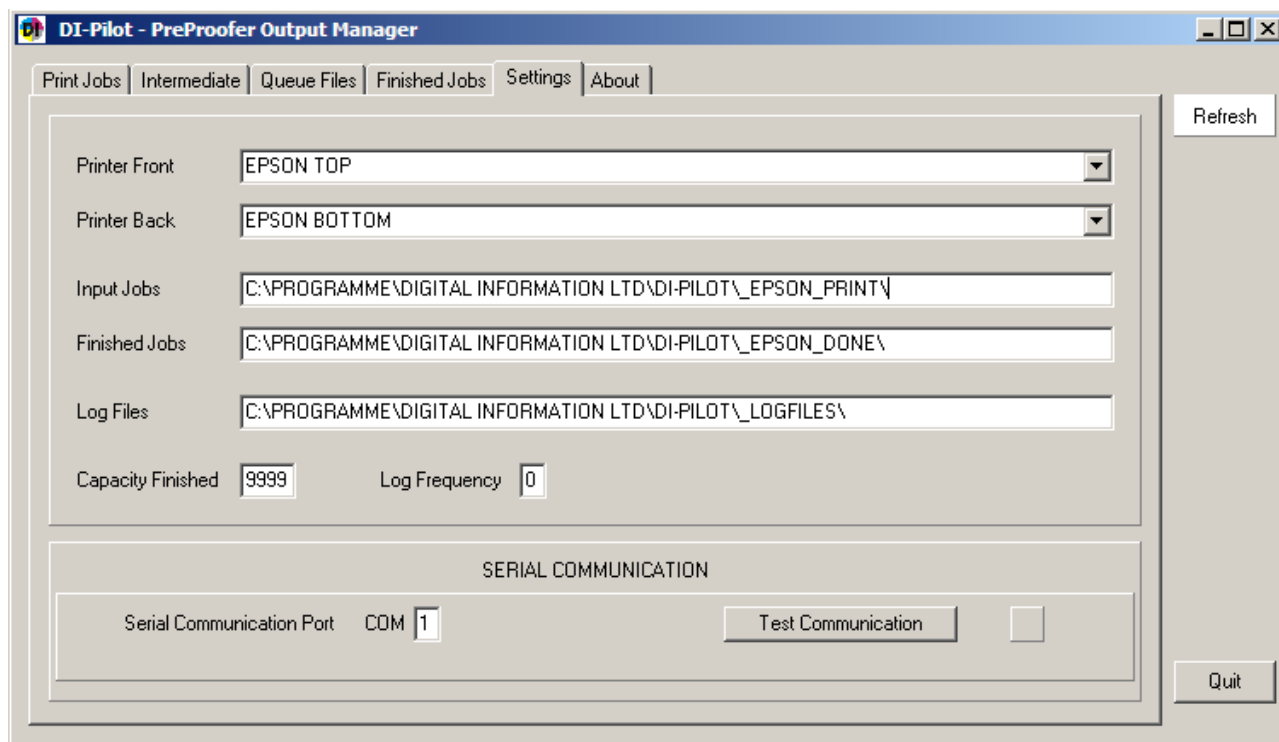
The color management settings for the hotfolder mode are set for each printer individually. Set the printer paper profile (1) and the reference profile (2). Activate the CMM by activating the check box (3).



Preproofer DI7498-21 EN

4 Setup the DI-P i lot Output Manager

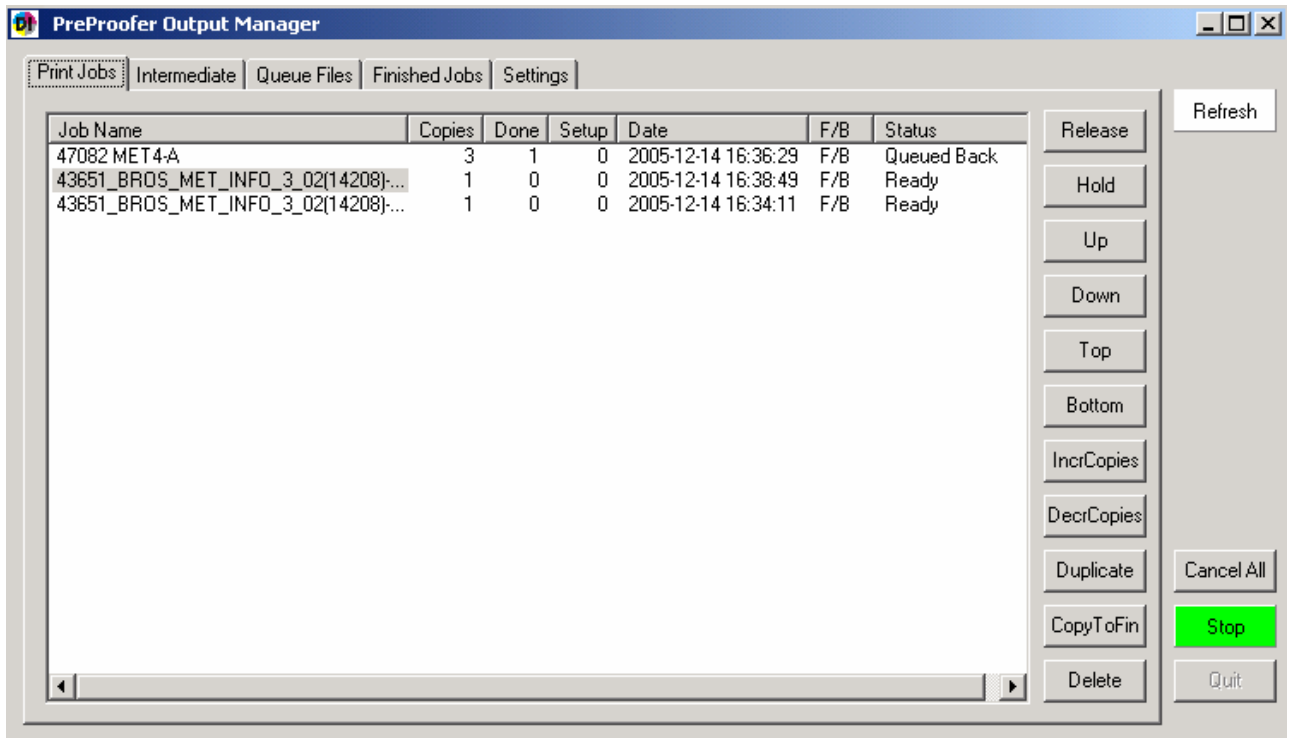
Start the software and open the tab Settings in the DI-P i lot Output Manager:



Parameter name	Function
Printer Front	Select the Front Printer
Printer Back	Select the Back Printer
Input Jobs	Select as the input directory the location where DI-Plot writes the printer files
Finished Jobs	Directory where the printed files should be moved after processing
Log Files	Directory for the log files
Capacity Finished	Amount of jobs which kept in the Finished Jobs folder for reprint. If the finished jobs exceed the value, the software will delete the oldest printed files.
Serial Com port	Select the com port which the electronic box is connected.
Test communication	Press this button to verify the connection is fine to the electronic box

4.1.1 Working with the DI-Pilot Preproofer Output Manager

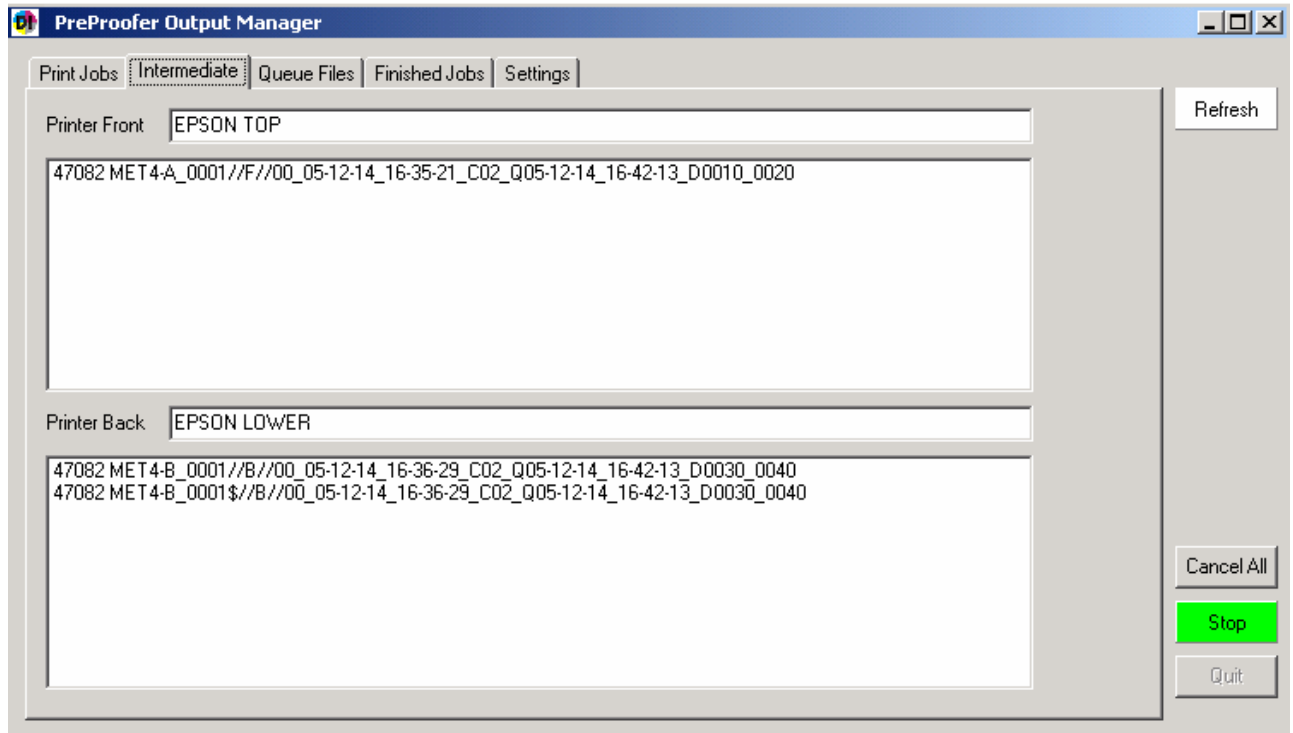
Tab Print Jobs



All processed jobs by DI-Plot will appear in this tab.

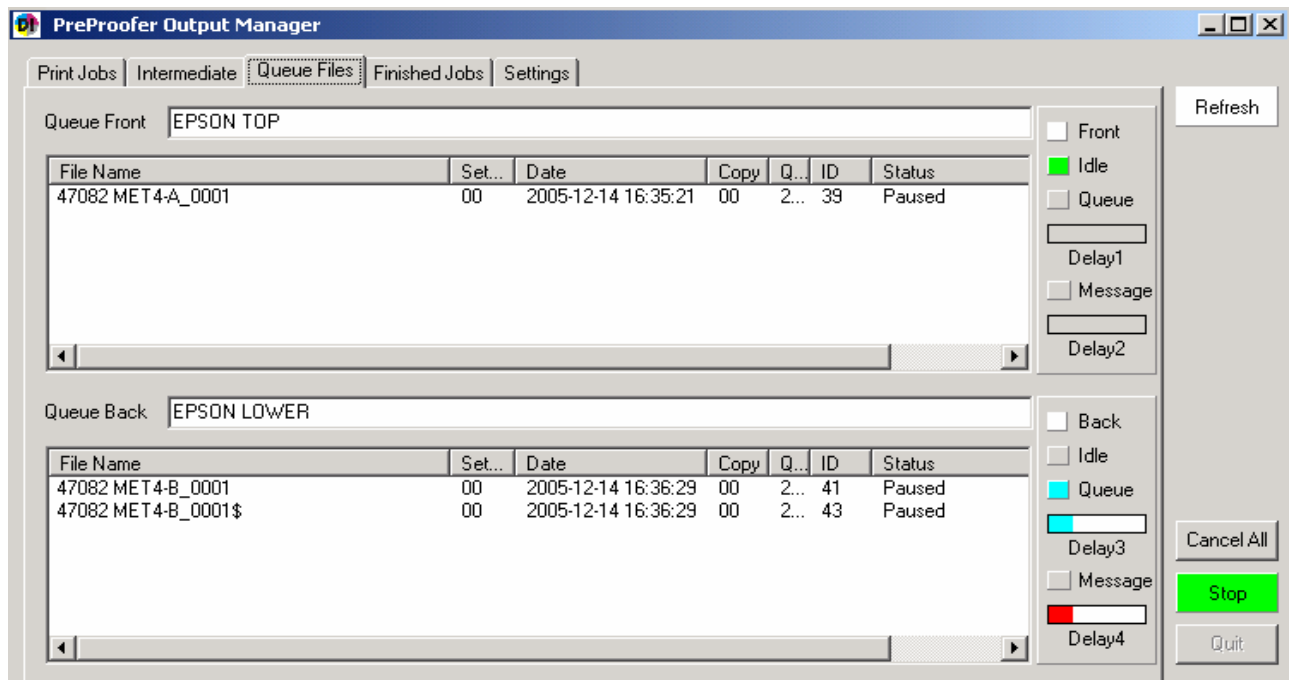
Button	Function
Release	Change the job status from Hold to Release
Hold	Change the job status from Release to Hold.
Up	Change the job position in the list
Down	Change the job position in the list
Top	Change the job to the top position
Bottom	Change the job to the lowest position
IncrCopies	Increase the number of copies by 1
DecrCopies	Decrease the number of copies by 1
Duplicate	Duplicates a job
Copy to fin	Copies the job to the tab Finished jobs
Delete	Deletes the job
Cancel all	Deletes all job in the Print Job list

Tab Intermediate



Jobs which will print next will appear in this tab.

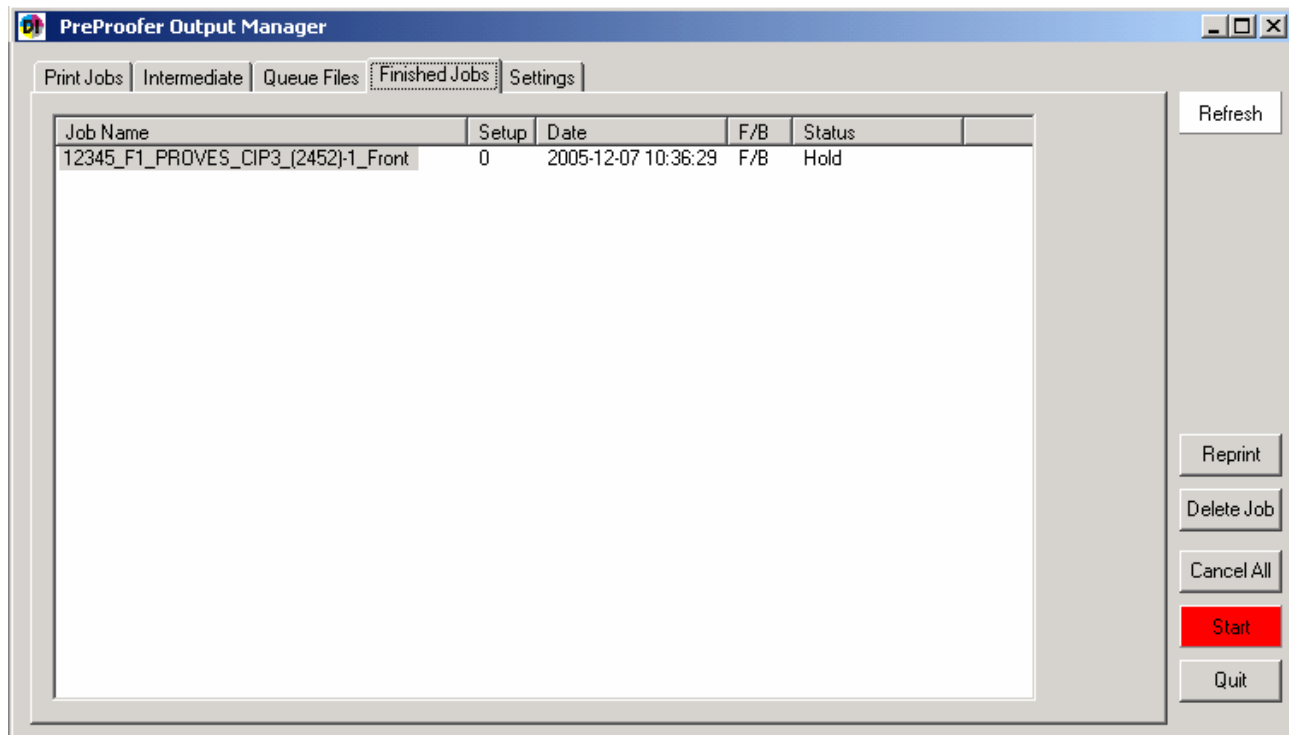
Tab Queue Files



Shows the printer queue from printer FRONT and printer BACK. Jobs will be in status PRINTING or PAUSED. The status is controlled by the timer delays 1 to 4 from the Preproofer page templates in DI-Plot.

Timer	At the end of the timer...
Delay 1	Job in Queue front will set to print. Printer FRONT starts
Delay 2	Job in Queue Back will start printing. Printer BACK starts
Delay 3	Printed job will be release by printer BACK
Delay 4	After starting printing the back job, next job in Queue Front will be set to print

Tab Finished Jobs



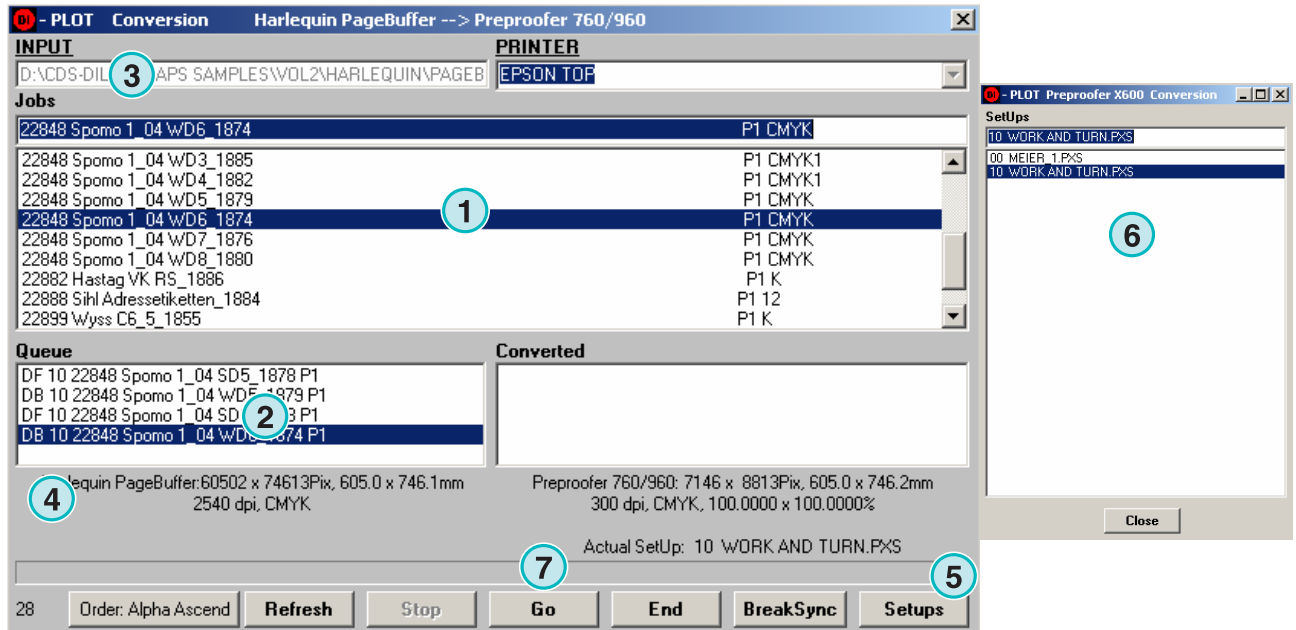
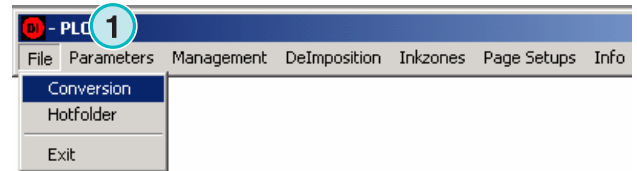
All processed and printed jobs will appear in this list. With the button “Reprint” a selected job can be printed again. Use “Delete Jobs” to delete jobs. Button “Quit” ends the program.

5 Run the software to get the registration

5.1 Start DI-Plot

During registration process, use the software in manual mode.

Open in DI-Plot the menu File → Conversion (1)



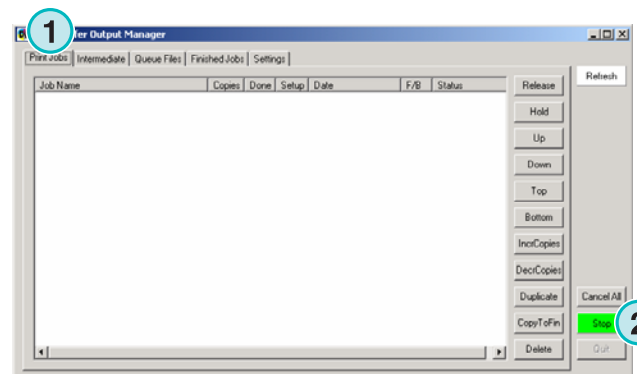
All workflow jobs are displayed in the job list area (1). Select first the correct page template using the button “Setup” (5). It will open the window (6) where a template can be chosen. Now select a job from job list area (1) by clicking once on it. The selected job moves into the Queue waiting list area (2). To deselect a job from the Queue waiting list area, click once on it. When the Queue waiting list area is filled with jobs, press the button (7) to start processing the selected jobs for the Preproofer system.

	Parameter name	Function
(1)	Job list area	Shows all jobs from the selected input directory. Displays the job name, page number and the colours. Spot colours will be shown as numbers. E.g. CMY123 (CMYK job with 3 spot colours)
(2)	Queue list area	All select jobs get into the queue area. Visible parameters <ul style="list-style-type: none"> – DF = Front job, front side setting from template is active – DB = Back job; back side setting from template is active – 00..99 = Page ID from the selected page template
(3)	Input path	Shows the input directory
(4)	Job information	Information from the selected job. Shows data type, size in pixel and millimetre. Resolution and number of colour planes

	Control buttons	Function
	Order alpha/time descent/ascent	Job sequence by name or by date/time
	Refresh	Reads the input directory
	Stop	Stops the conversion process
	Go	Starts the conversion process
	End	Quits the conversion menu
	BreakSync	Resets the conversion mode
	Setups	Opens a window (21) where all available job templates are displayed. Select the template here

5.2 Start DI-P i lot Output Manager

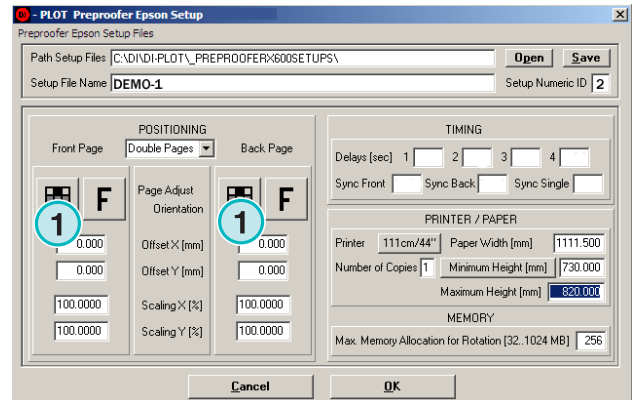
Start the software and go to the Tab “Print Jobs” (1) and activate the software by selecting the button “Start” (2). The button will change to green (=output is active).



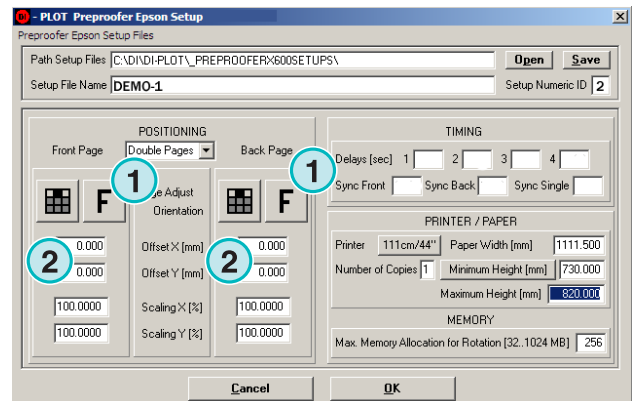
5.3 Adjust Front and Back side

To adjust the register from the front and the back side proceed like:

- 1.) Select the position in the paper adjustment (1)
Standard is centered for booth sides.

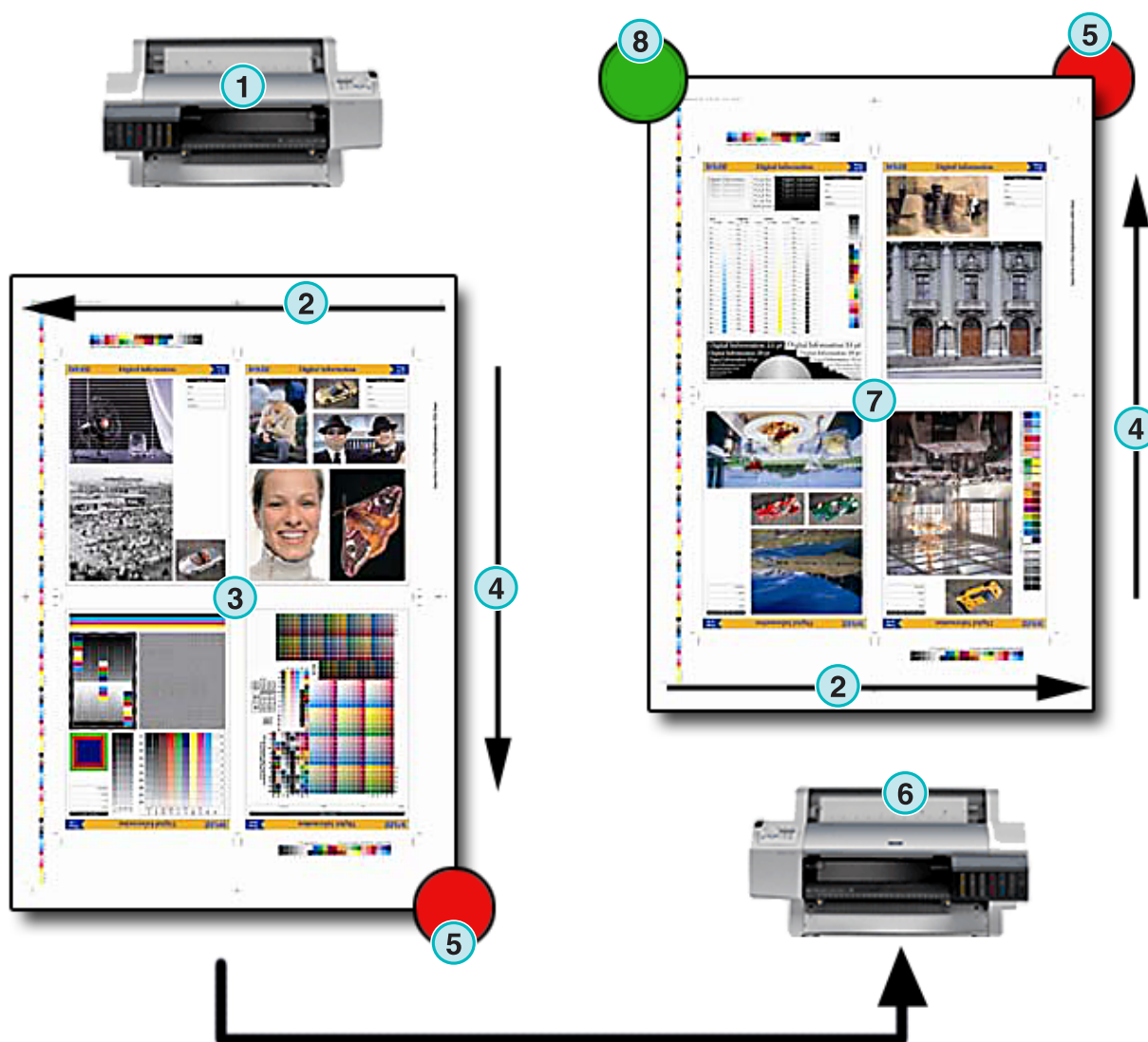


- 2.) Select the correct orientation (1). Click once on the F, to rotate by 90 degrees.
Set the offset values for x and y values for front and back to zero (2).



- 3.) Print a front/back job
- 4.) Measure the registration. If necessary, scale the x and/or y axis for front and back.

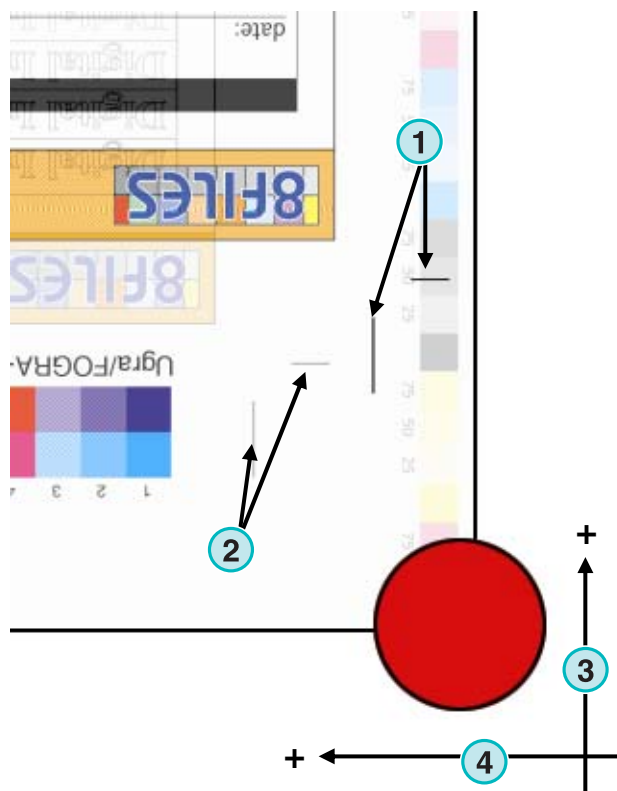
5.) The paper is turned and printed like



- (1) Top Epson printer
- (2) Print head direction
- (3) Front side
- (4) Paper feed direction
- (5) Reference point front side: X and Y = 0
- (6) Lower Epson printer
- (7) Back side
- (8) Reference point back side: X and Y = 0

6.) Put the imposition proof on a light table or use a flashlight. Measure the distance between the crop marks from the front and from the back side

- (1) Crop mark front side
- (2) Crop mark back side
- (3) Y axis (paper feed direction)
- (4) X axis (print head direction)



7.) The measured difference in this example would be:

delta X = 15 mm

delta Y = 9 mm

In the x direction, the crop mark from the front side is too much on the right. To register the job, the image on the front side has to move to the left (into the sheet, move away from the paper edge). Therefore the correction offset value is positive, +15 mm.

In the y direction, the crop mark from the front side is too high. To register the job, the image on the front side has to move down (out of the sheet, move to the paper edge). Therefore the correction offset value is negative, -9 mm.

5 Run the software to get the registration

Adjust Front and Back side

The new values in the page template look like shown in the screenshot on the right.

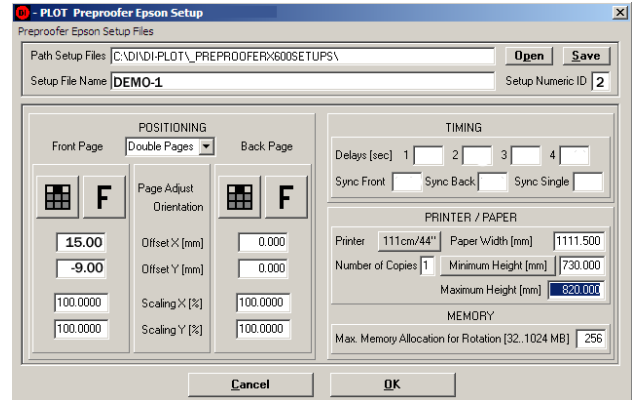
Apply the offset values only to one side.

If the positioning is not correct, add the measured difference to the existing value.

Example

Measured difference value in x-axis is 1.5mm and the image has to move into the sheet. The new values would be:

Front page: Offset X = 16.5



6 Hotfolder mode

6.1 Workflow job names

For high automation, the software can be used in hotfolder mode. To run the system in the automatic hotfolder mode, the prepress workflow has to produce input files for DI-Plot, which then can be recognized on the job name which is front side and which is back side.

Example:

Job name	Explanation
98120SpeschaBuchF1SD.tif 98120SpeschaBuchF1WD.tif	→ Front and back page for the first sheet of the job 98120SpeschaBuch → Front side is marked as SD, back side as WD
98120SpeschaBuchF2SD.tif 98120SpeschaBuchF2WD.tif	→ Front and back page for the second sheet of the job 98120SpeschaBuch → Front side is marked as SD, back side as WD
98596FarnerF1SD.tif 98596FarnerF1WD.tif	→ Front and back page for the first sheet of the job 98596Farner → Front side is marked as SD, back side as WD
98596FarnerF2SD.tif 98596FarnerF2WD.tif	→ Front and back page for the second sheet of the job 98596Farner → Front side is marked as SD, back side as WD

6.2 Work types

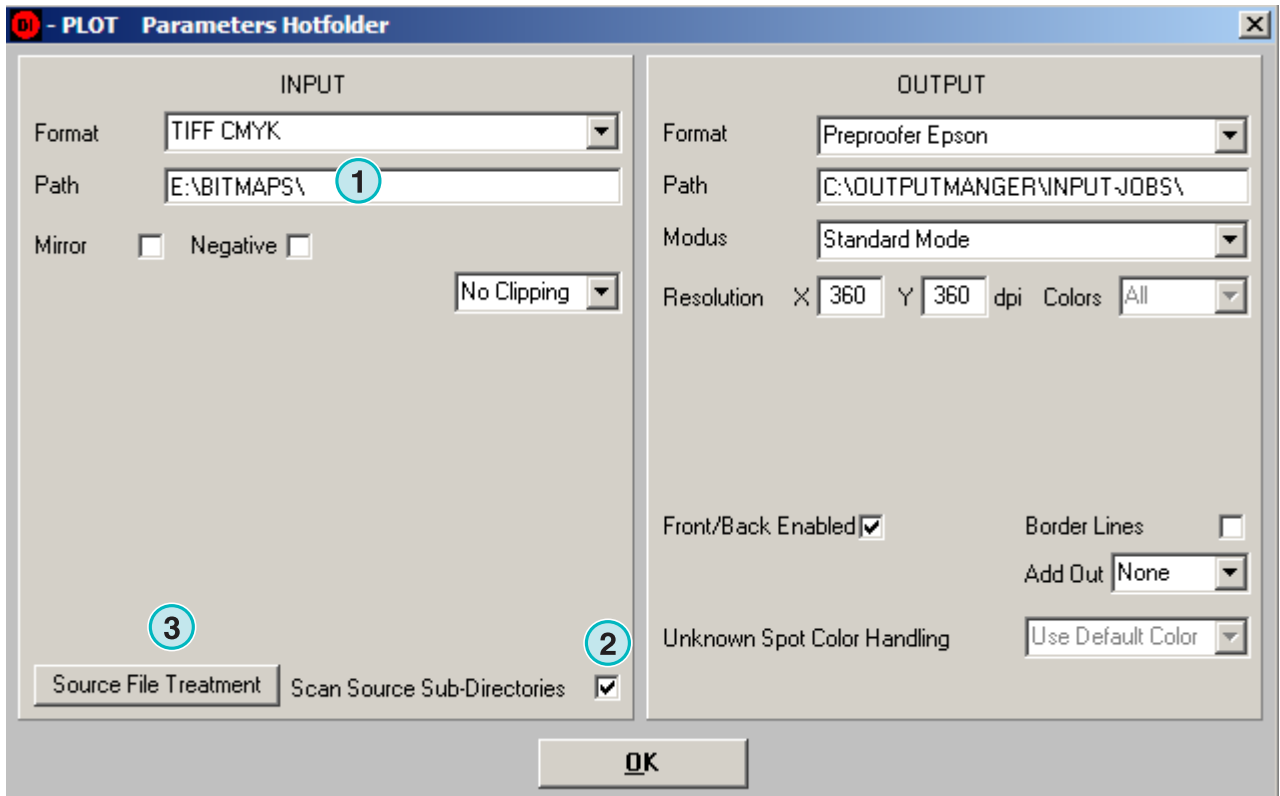
Depending on how the job will be printed on the press type (w/wo perfector) etc., there are different work types to be

Work Type	Explanation
Single sided	Printing on one side of the paper only
Sheet work	Turning the paper, printing different data on both sides of the paper
Perfector	Tumbling the paper, printing different data on both sides of the paper
Work and Turn	Turning the paper, printing the same data on both sides of the paper
Work and Tumble	Tumbling the paper, printing the same data on both sides of the paper

6.3 Setup hotfolders

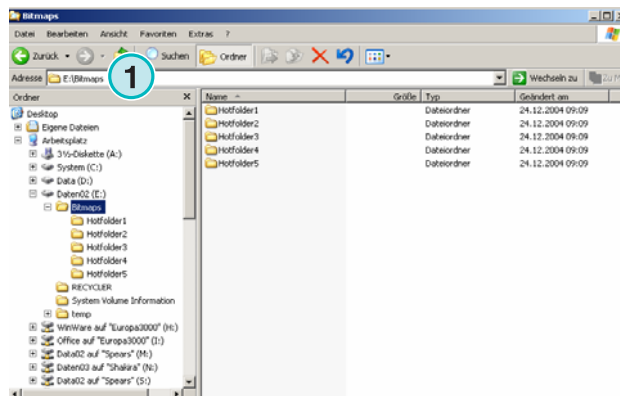
To setup DI-Plot for different hotfolder directories, proceed like:

1.) Set the root directory for the hotfolders

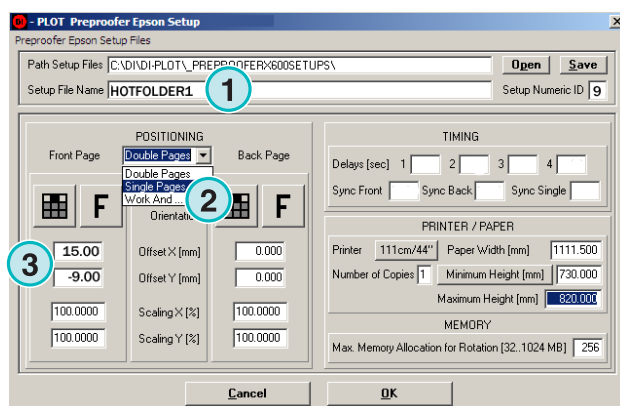


	Parameter name	Function
(1)	Input path	The input folder will be the root folder for all hotfolders
(2)	Scan Source Sub-Directories	Activate it to enable the program to scan the subfolders
(3)	Source File Treatment	Set to ERASE after processing

Example:



Assign to each input hotfolder an individual “Setup hotfolder” template with the different work styles like shown in the screenshot to the right.



	Parameter name	Function
(1)	Setup File Name	Set this name equal the name of the hotfolder.
(2)	Positioning: Double Pages	Printing different jobs on both sides
(2)	Positioning: Single Pages	Job will be printed on the front side, back side is empty
(2)	Positioning: Work and...	Printing same job on both sides
(3)	Parameters	Set the parameters for your work style. Define the front/back x, y offset values for registration. Set the scaling factor if necessary.

To follow the example, the Setup File Name for the other “Setup hotfolders” templates would be:

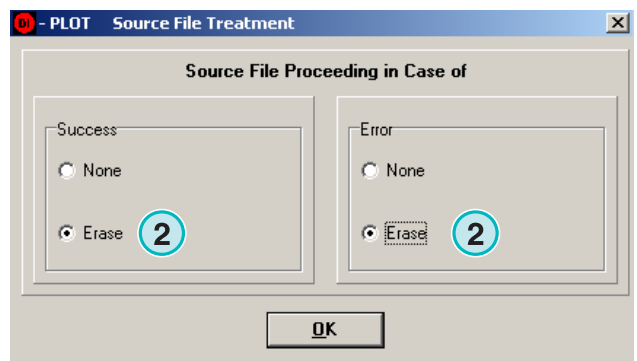
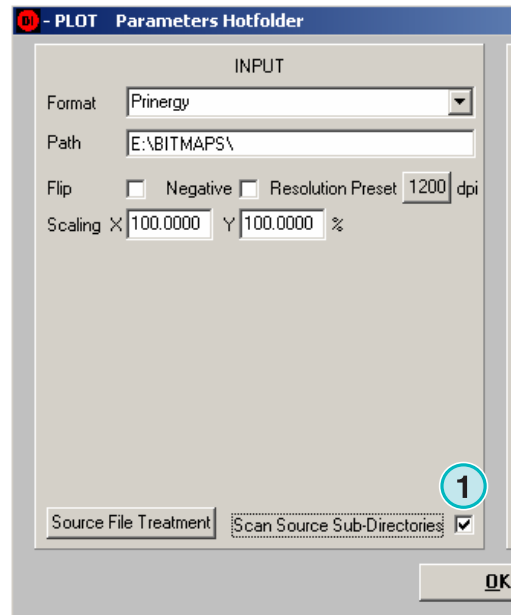
- Hotfolder2.pxs
- Hotfolder3.pxs
- Hotfolder4.pxs
- Hotfolder5.pxs

Note

The link between the “hotfolder directory” and the “hotfolder conversion parameters” is simply the name.

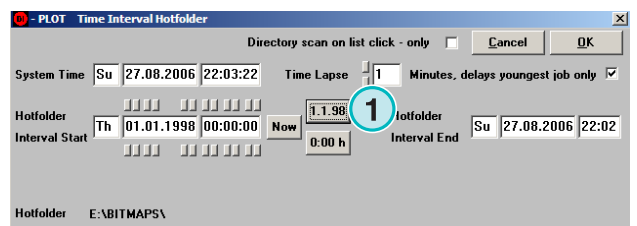
Important

Set the checkbox “Scan source sub directories” (1). The software will then check the created hotfolders. Open “Source File Treatment” and set the options to “Erase” (2).



Open the menu “Parameters” -> “Time Interval Hotfolder”

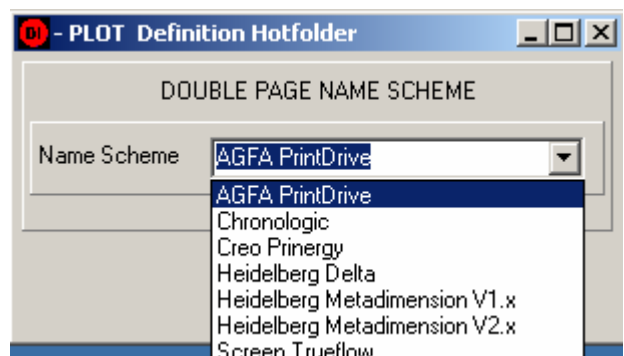
Set the “Hotfolder Interval Start” to the start date 1.1.98 by pressing the button “1.1.98” (1).



6.4 Name schemes for Hotfolder mode

The software needs to know how the file names are defined for the front and back side of the imposed jobs.

Select the workflow name scheme from the menu entry “Definition Hotfolder”.



Name scheme examples

Name scheme	File examples	
Agfa PrintDrive	Front side Jobname_Front_cmyk.ps	Back side Jobname_Back_cmyk.ps
Chronologic	Jobs get processed according to first come, first serve: 1.) First job goes to FRONT 2.) Second job goes to BACK 3.) First job goes to FRONT 4.)	
Creo Prinergy Separated TIFFs	Front side Jobname.1A.C.TIF Jobname.1A.M.TIF Jobname.1A.Y.TIF Jobname.1A.K.TIF OR Jobname.2A.C.TIF Jobname.2A.M.TIF Jobname.2A.Y.TIF Jobname.2A.K.TIF OR Jobname.2C.C.TIF Jobname.2C.M.TIF Jobname.2C.Y.TIF Jobname.2C.K.TIF etc.	Back side Jobname.1B.C.TIF Jobname.1B.M.TIF Jobname.1B.Y.TI Jobname.1B.K.TIF OR Jobname.2B.C.TIF Jobname.2B.M.TIF Jobname.2B.Y.TIF Jobname.2B.K.TIF OR Jobname.2D.C.TIF Jobname.2D.M.TIF Jobname.2D.Y.TIF Jobname.2D.K.TIF etc.
Composite TIFFs	Front side Jobname.1A.CMYK.TIF OR Jobname.1C.CMYK.TIF OR Jobname.2A.CMYK.TIF etc. Note Connecting the PP system to Prinergy: – In Prinergy choose composite tiff output and set compression to None – In DI-Plot choose uncompressed tiff as input format and Creo Prinergy as Name Scheme	Back side Jobname.1B.CMYK.TIF OR Jobname.1D.CMYK.TIF OR Jobname.2B.CMYK.TIF etc.

Name scheme	File examples	
Heidelberg Delta	Front side	Back side
Delta file holds 1 page	Name_Schoen_1.DeltaExport	Nname_Wider_1.DeltaExport
Delta file holds 1 page	Name_Schoen&Wider_1.DeltaExport	Name_Schoen&Wider_2.DeltaExport
Delta file holds 2 pages (front & back)	Name_Schoen&Wider_1.DeltaExport (Page 1)	Name_Schoen&Wider_1.DeltaExport Page 2)
Delta file holds 1 page	Name_S01.DeltaExport	Name_W01.DeltaExport
Heidelberg Metadimension V1.xx	Front side	Back side
	Jobname_S01.pdf_01_F.tif	Jobname_W01.pdf_01_F.tif
	Jobname_01.pdf_01_F.tif	Jobname_01.pdf_02_F.tif
Heidelberg Metadimension V2xx	Front side	Back side
	Jobname_F.TIF	Jobname_B.TIF
Screen Trueflow	Front side	Back side
	Jobname_Front.ps	Jobname_Back.ps
Brisque	Front side	Back side
	Jobname_BG1SD-S1-W1-F0.ch	Jobname_BG1SD-S1-W1-F0.ch
	Jobname_1SD-S1-W1-F0.ch	Jobname_1WD-S1-W1-B0.ch
'_F' & '_B' marked jobs	Front side	Back side
	Jobname_F	Jobname_B
'_Front' & '_Back' marked jobs	Front side	Back side
	Jobname_Front	Jobname_Back

6.5 Color separated Input

When running the software with separated TIFF files, the software does not know how many color separation a job contains. The time lapse parameter defines sets the time difference between the single color pages of a job. Depending on the speed of the workflow server, it may take several minutes till the next color separation of a job has been written. When a job comes in, the software will wait after each color separation the value set here (1) before it starts with the conversion. A slow system needs a high value; a fast system will work with the value set to 1.

