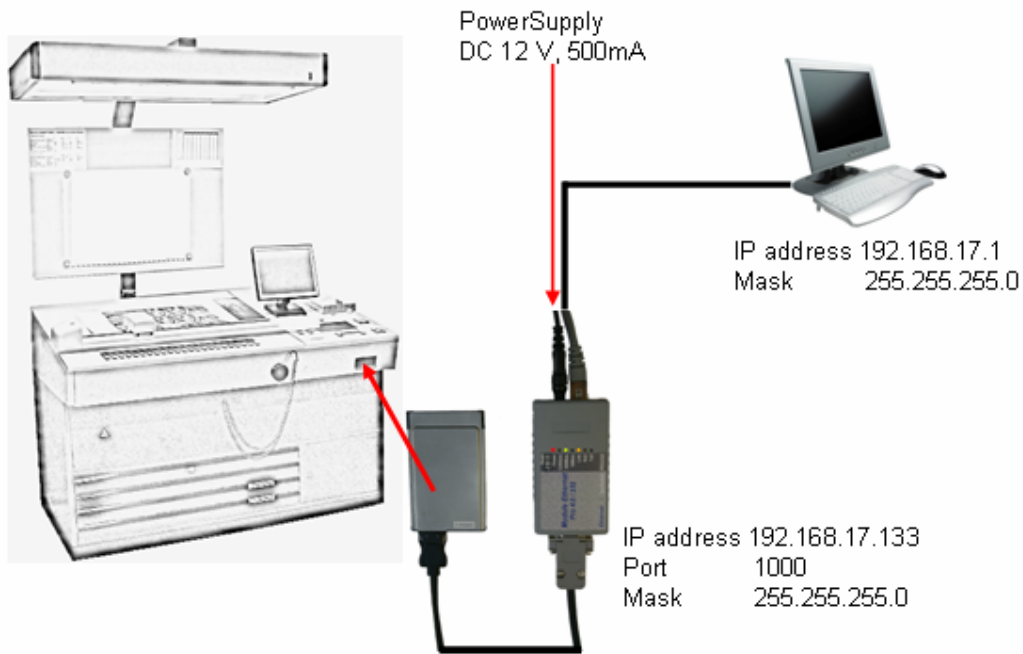


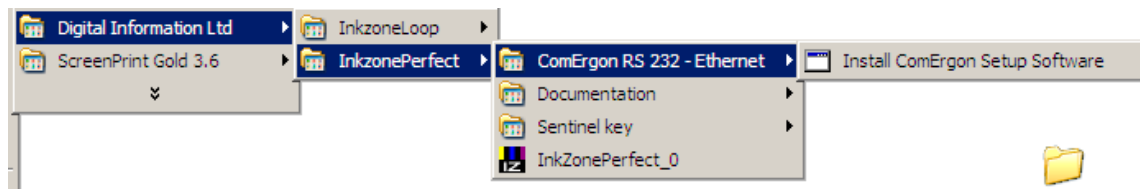
Comergon - RS232 to Ethernet converter

1. Basic configuration



2. Run the installer for the Comergon adapter

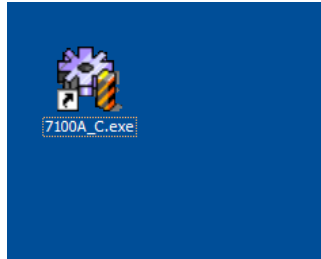
Go to the program menu in the Start > Program section and start the installer for the setup utility like:



Comergon - RS232 to Ethernet converter

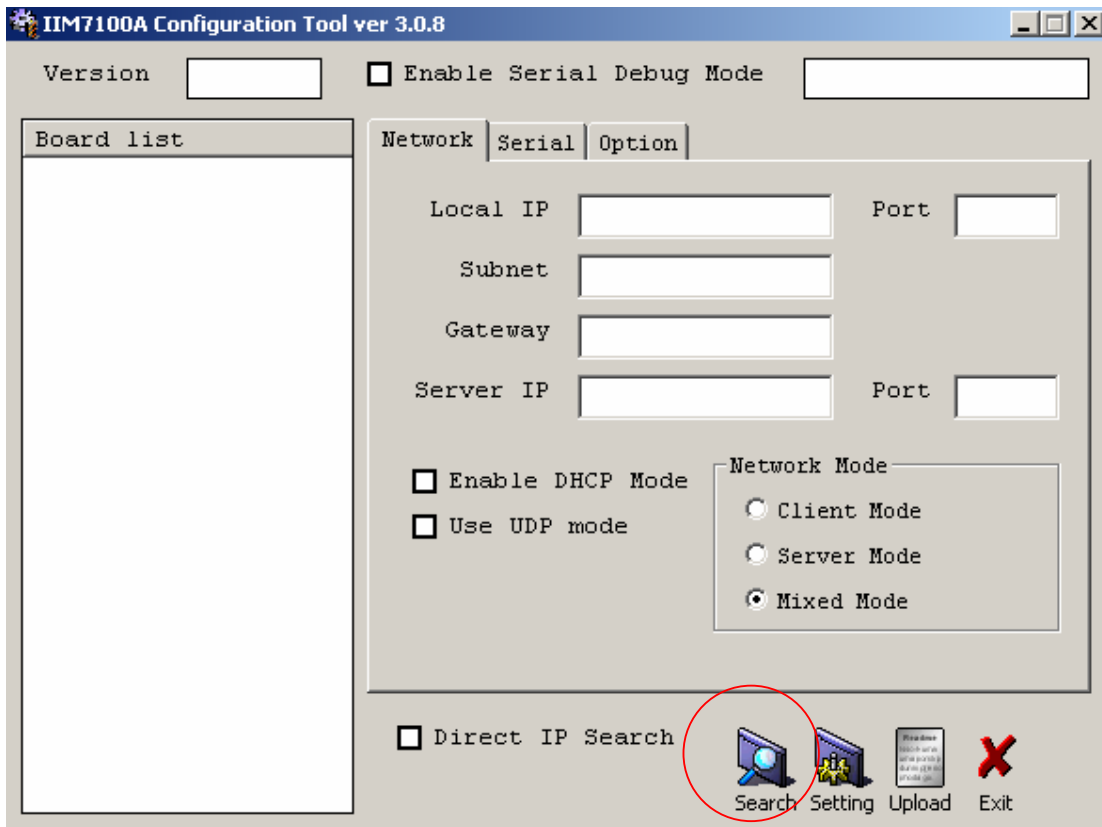
3. Search for the Comergon adapter

The installer will create a shortcut icon into the program called “7100A_C.exe” on the desktop. Start the program. Press button “Search” to locate the ComErgon box on the network.



Note:

It's highly recommended to connect the “ComErgon RS232 – Ethernet box” through an additional Ethernet card and Ethernet cross over cable to the computer. Avoid using 1000MBit Ethernet cards! This could cause the Comergon to fail.



Comergon - RS232 to Ethernet converter

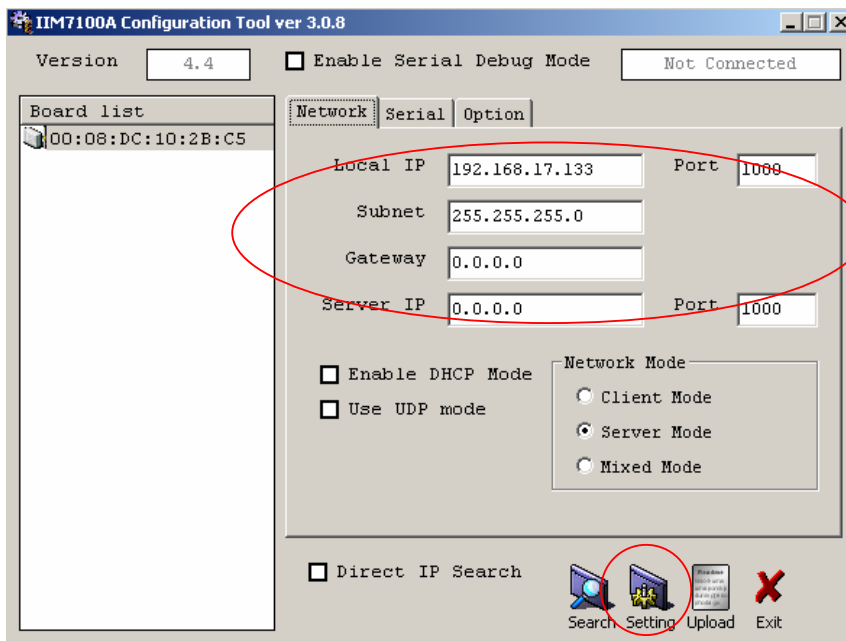
4. Set the IP address parameters

Set the IP address, Port und Subnet according to your network:

Example

IP address Comergon adapter	192.168.17.133
Subnet	255.255.255.0
Port	1000
Network mode	SERVER MODE

IP address PC	192.168.17.1
Subnet	255.255.255.0



Press the button “Setting” to store the values permanently.

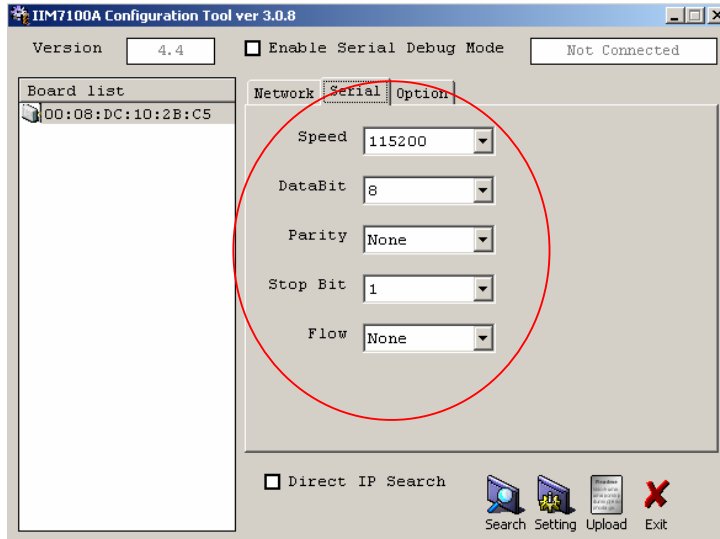
Note

After changing the IP address, the Comergon adapter needs a complete restart. Unplug the power cable and the cable which goes to the emulator card. The adapter will be restarted. Remove also the emulator card from the slot at the console and unplug the cable. The emulator will restart after restoring the card into the slot and attaching the cable.

Comergon - RS232 to Ethernet converter

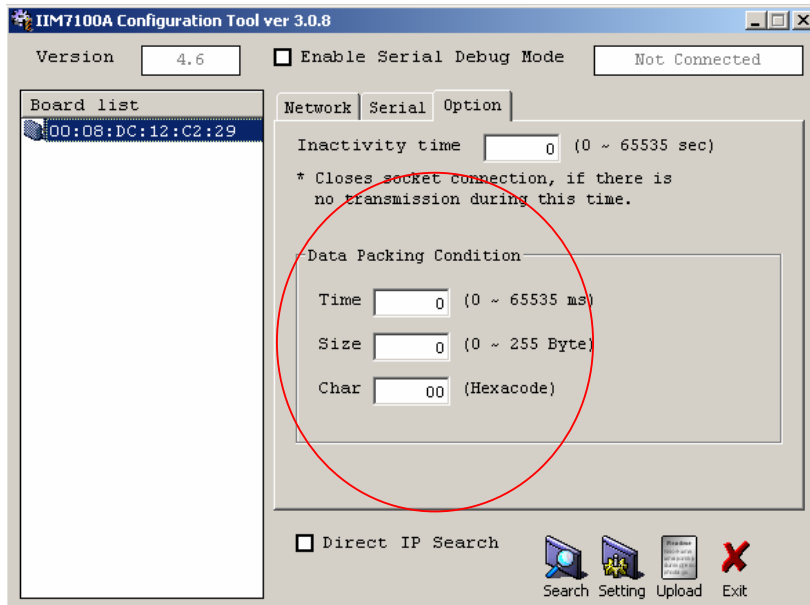
5. Set the serial communication parameters

Set the serial communication parameter like:



6. Set the serial communication parameters

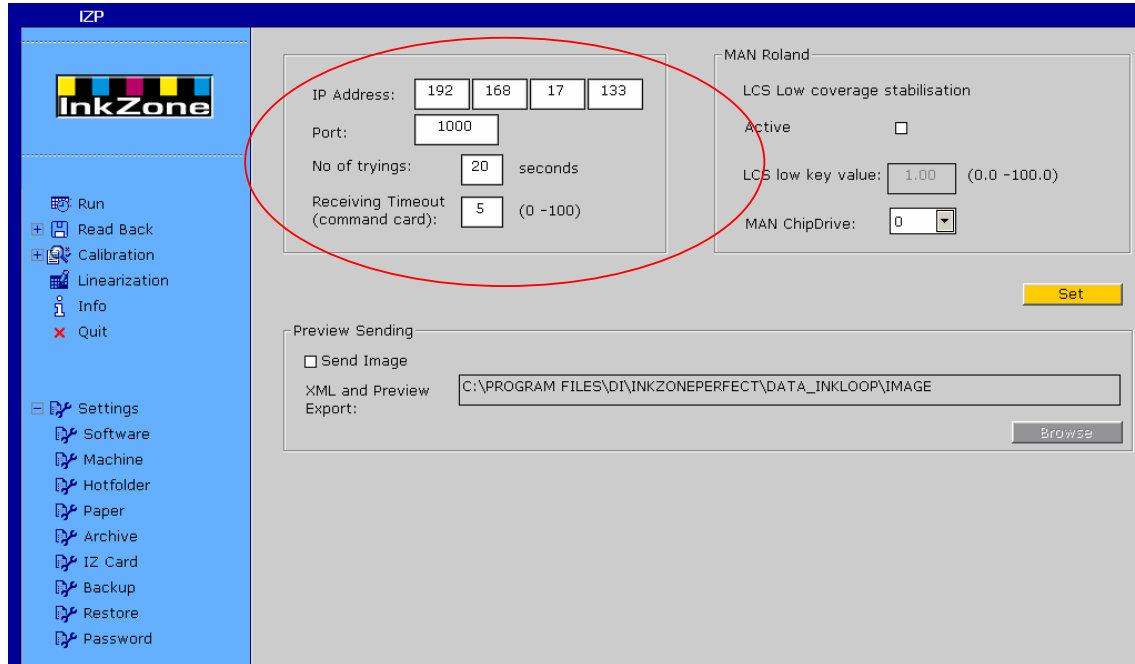
Set the option parameters like:



Comergon - RS232 to Ethernet converter

7. Inkpreset with InkzonePerfect without InkzoneLoop

When the IP and port address are configured like 192.168.17.133 / port=1000 (see nr 4), set the parameters in InkzonePerfect like:



8. Setup InkzoneLoop

When the IP and port address are configured like 192.168.17.133 / port=1000 (see nr 4), set the parameters in InkzoneLoop like:

```
InkZoneLoop.INI - Notepad
File Edit Format View Help
CardCOM=6
# IP address Comergon adapter
CardHost=192.168.17.133
# Port number Comergon adapter
CardPort=1000
# Number of printing units
Units=5
# Number of ink keys
Zones=23
# scale in the ink key window 0 - 1000
# Min Value = 10
# Max Value = 1000
scale=100
```