

Digital Information Ltd.

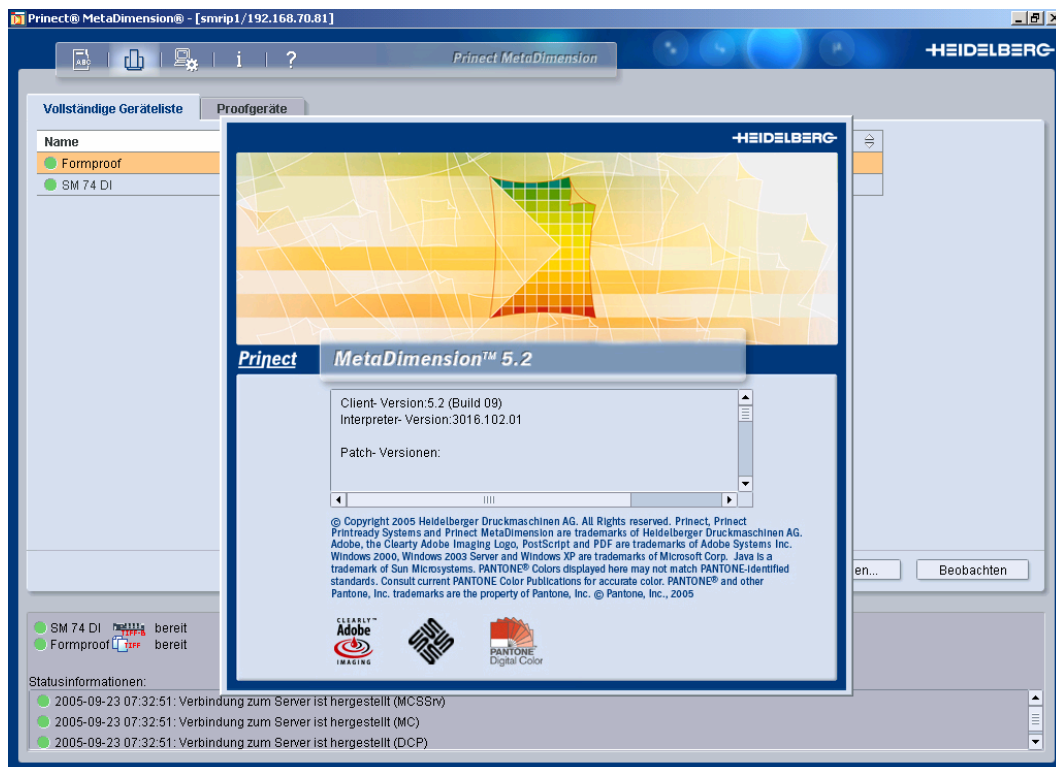
DI-Plot

**Manual for setup a
connection to
Heidelberg
Metadimension 4.x / 5.x**

Based on DI-Plot version 5.1

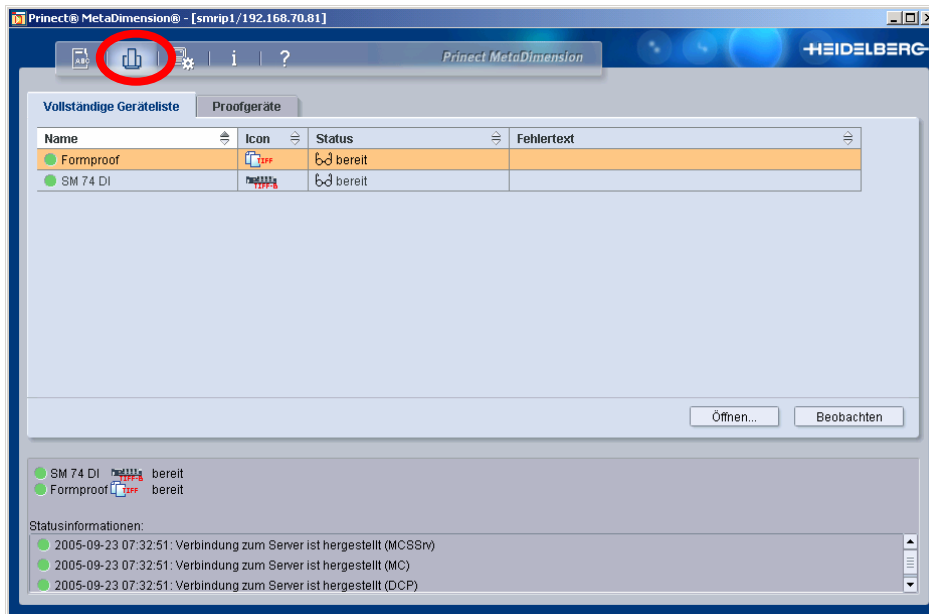
Digital Information Ltd.
Technoparkstrasse 1, Ch-8005 Zürich, Switzerland
Phone ++41 (0)43 818 20 00, Fax ++41 (0) 818 20 09
www.digiinfo.com, info@digiinfo.com

Digital Information Ltd.

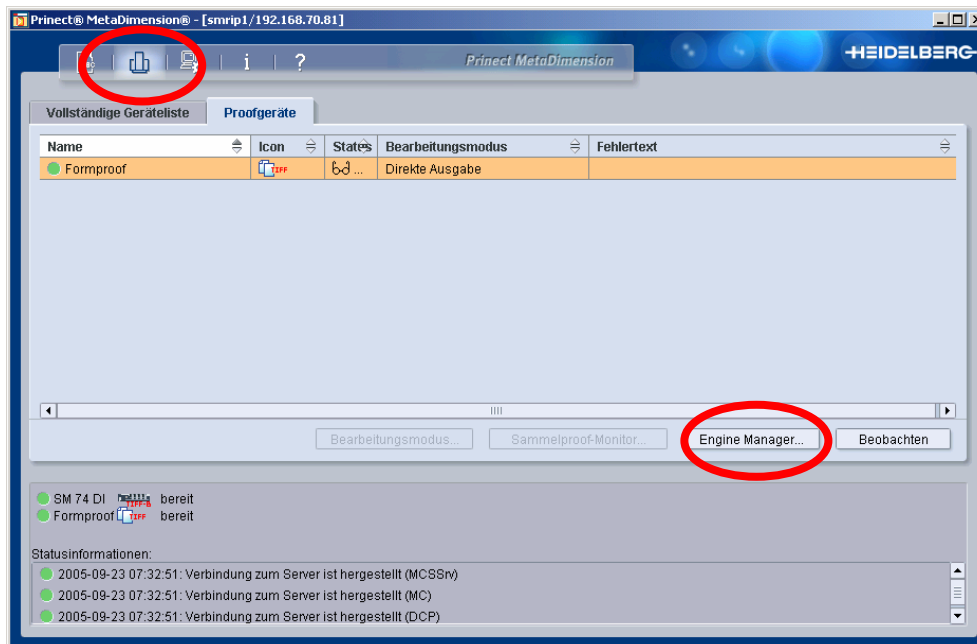


STEP 1: Create a new Output Device

Go to devices:

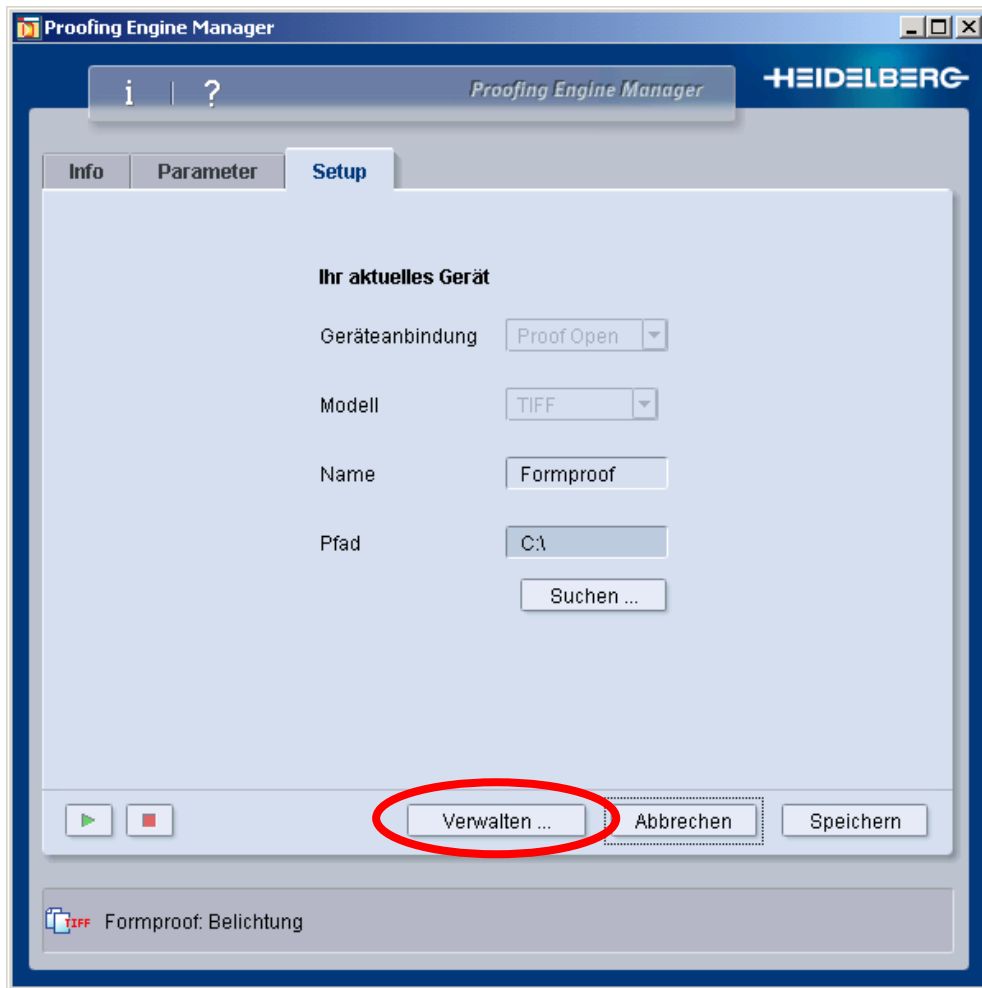


Go to proof devices and select the engine manager



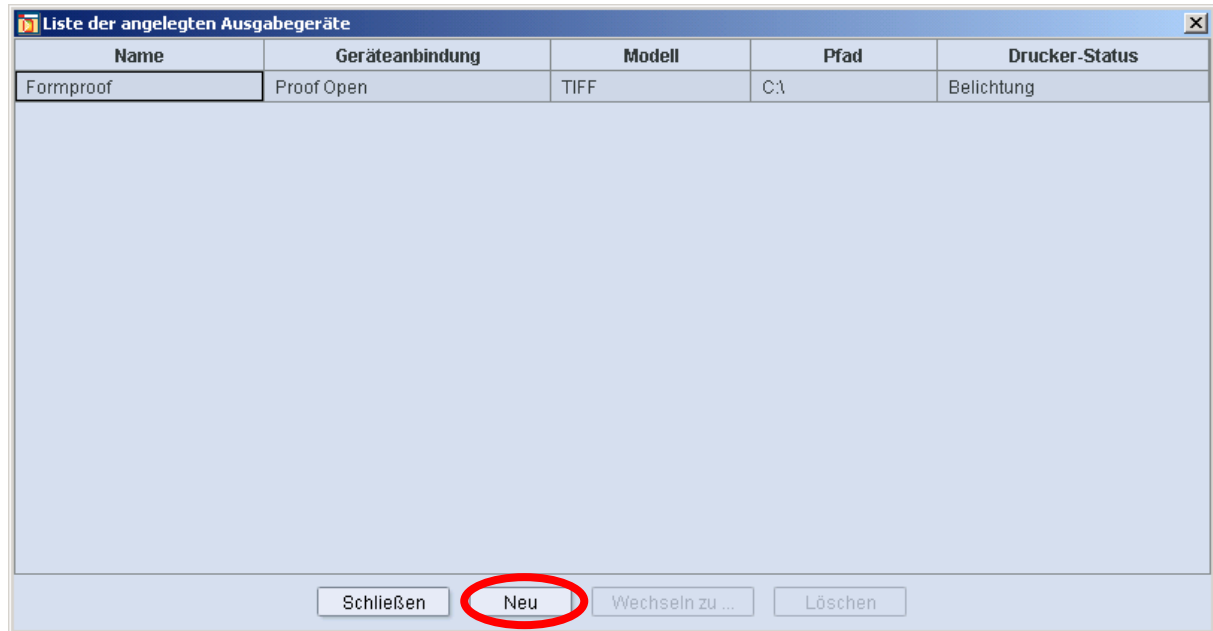
Digital Information Ltd.

Select “Administration”

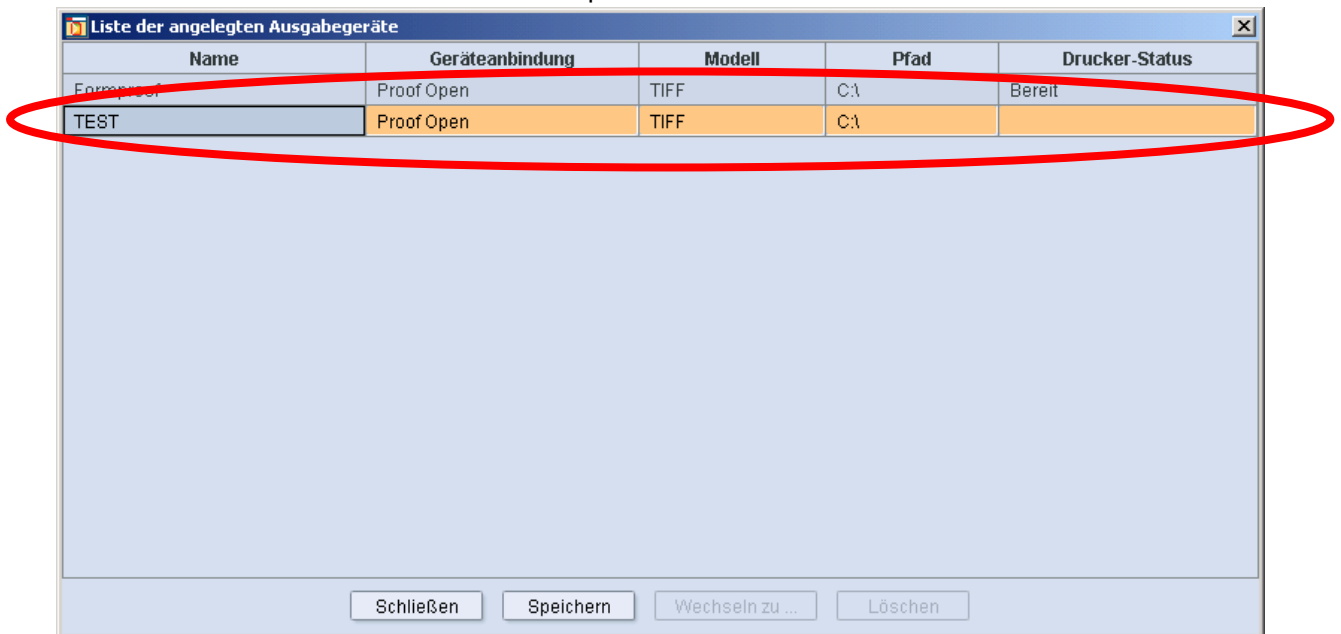


Create the new device by selecting the button NEW

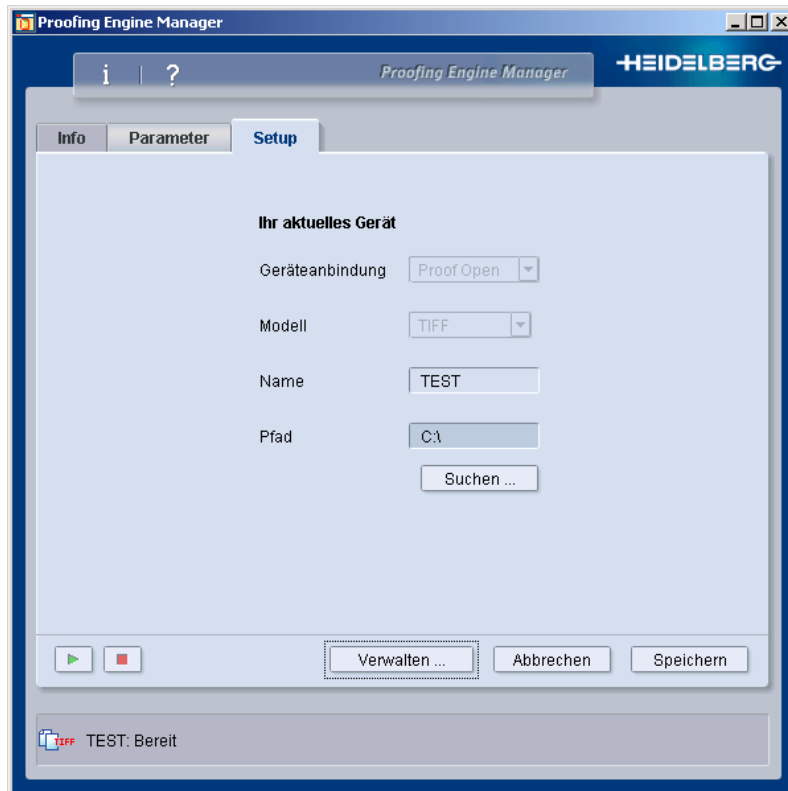
Digital Information Ltd.



Here the new device called TEST will show up:

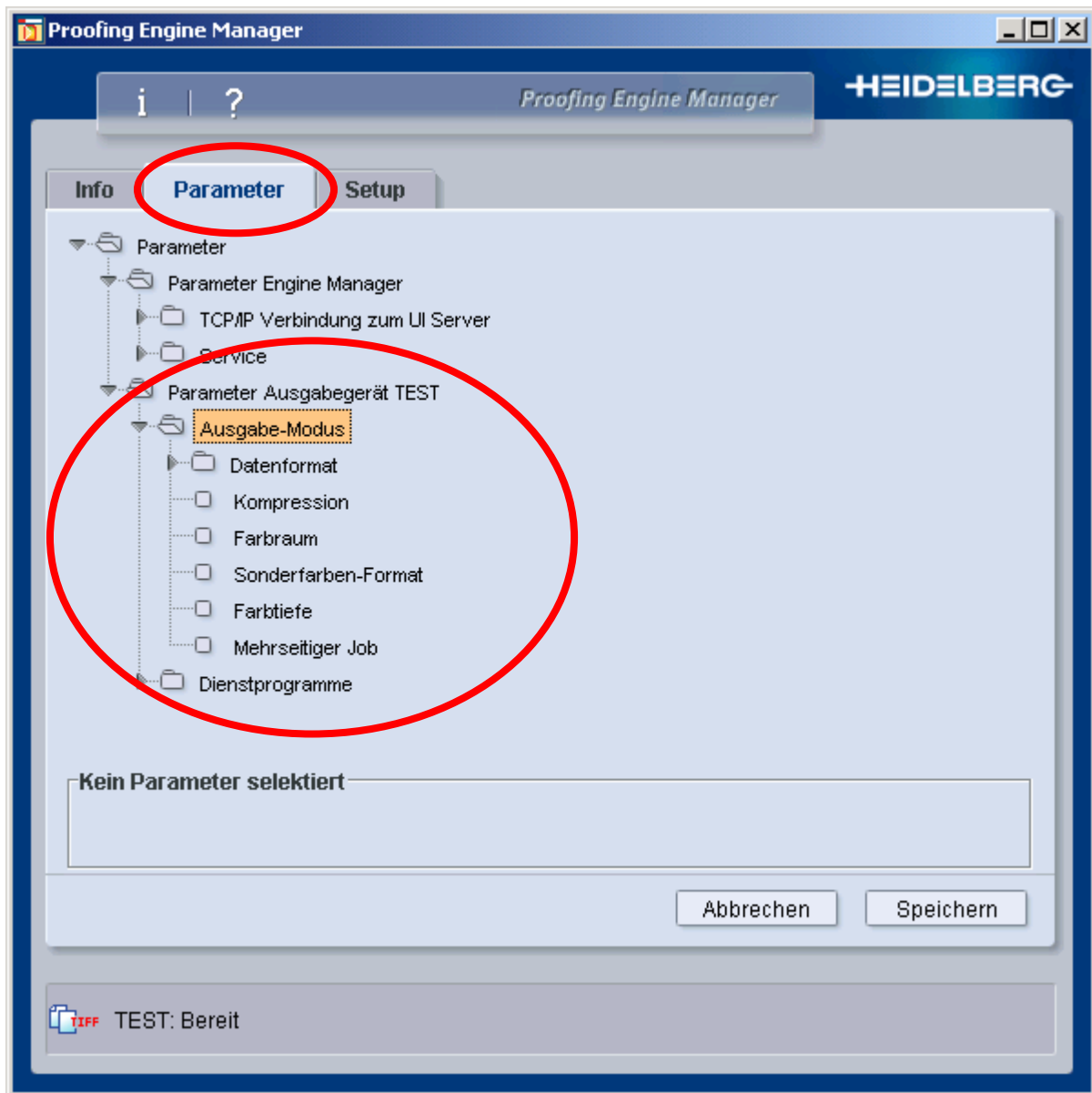


Digital Information Ltd.



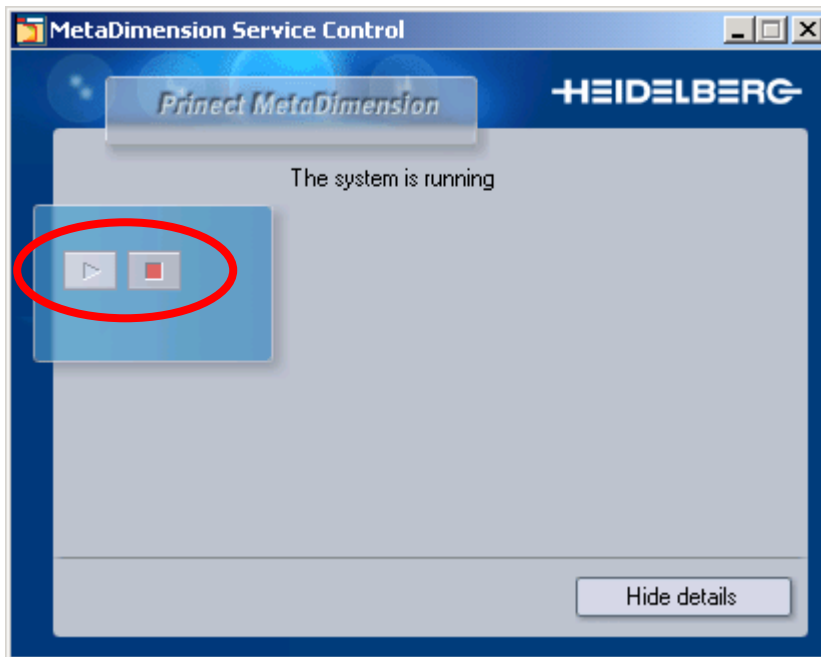
Digital Information Ltd.

In the tab “Parameter”, define the TIFF parameters:

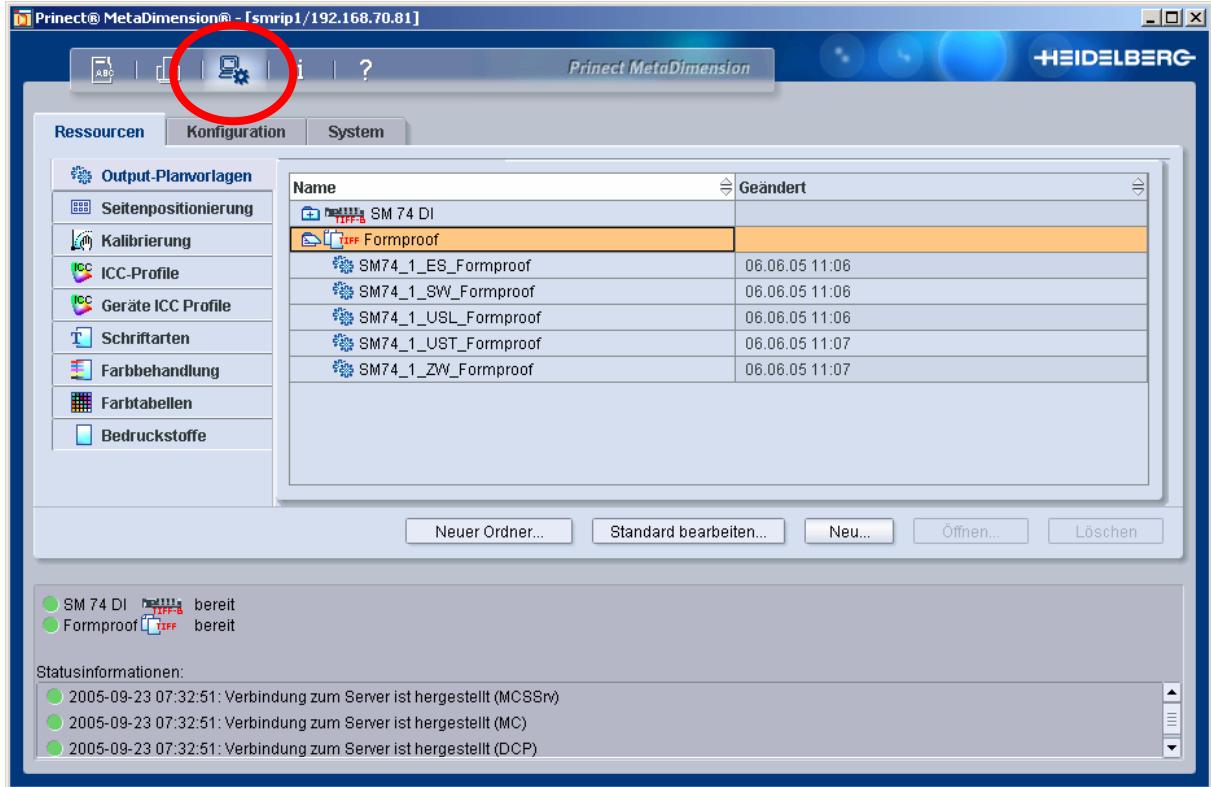


Digital Information Ltd.

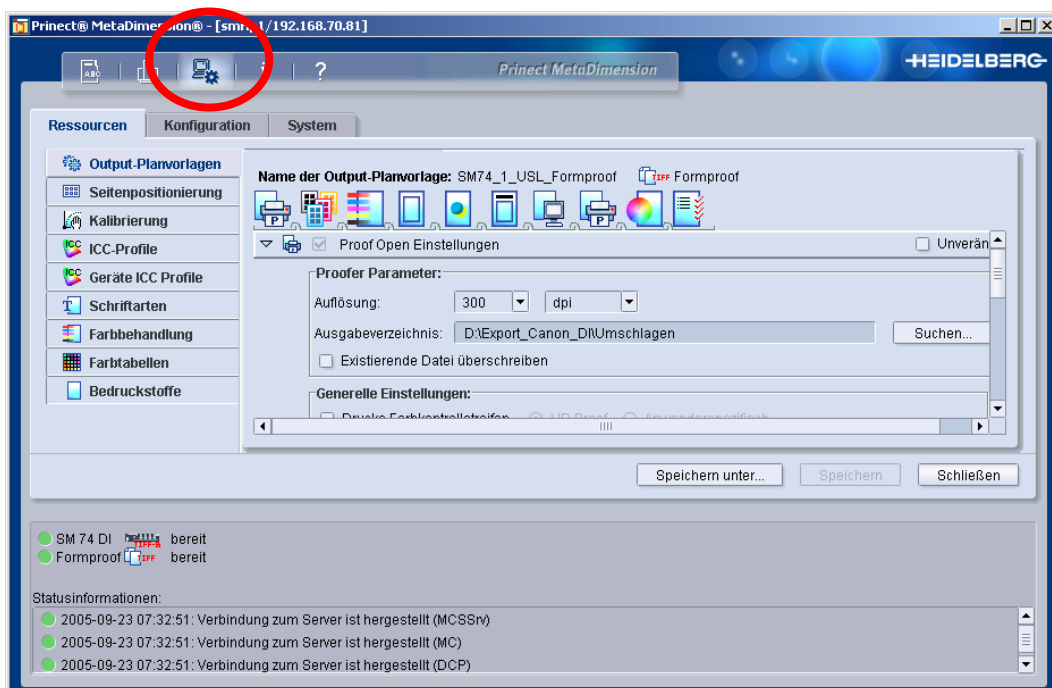
Restart the Metadimension Service:



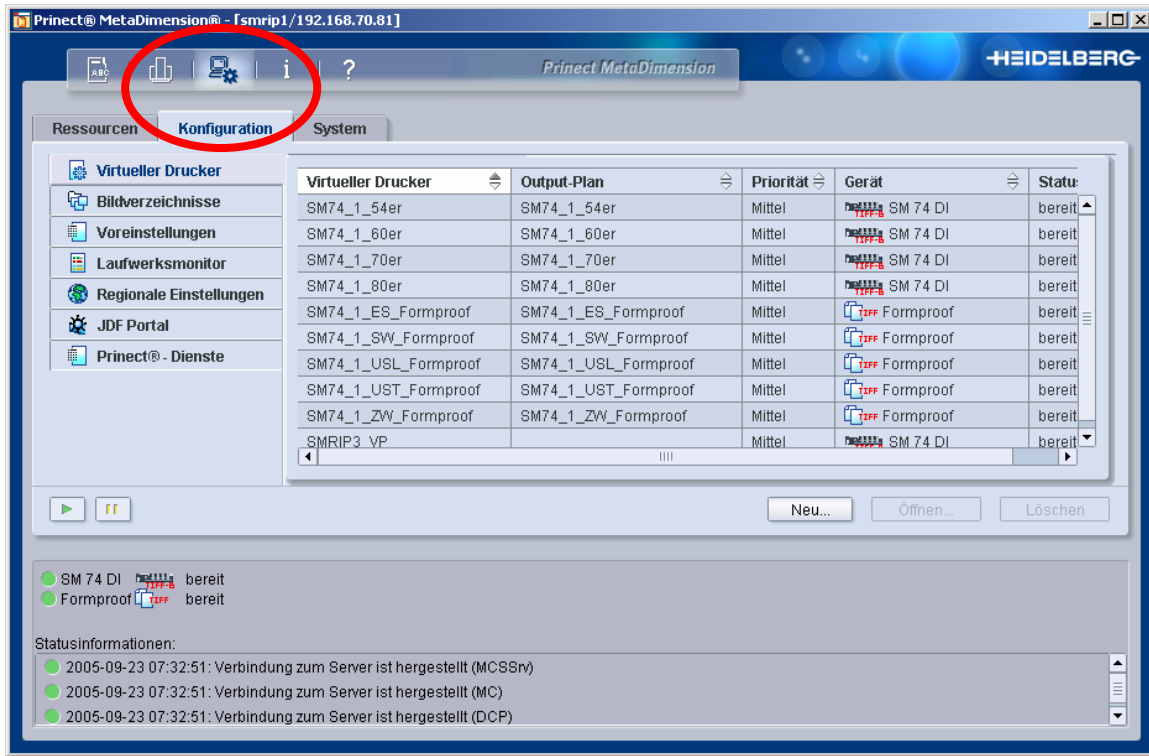
Step 2: Create an Output Plan for the new device



Set Resolution and the Output directory by selecting



STEP 3: Create a virtual printer for the new output plan



Select the device and the the ouput plan:

